

Presidency of the I. R. Iran
Plan and Budget Organization
Statistical Centre of Iran

Selected Results of Livestock Slaughter in the National Slaughterhouses – The Year 1396*

* It is the Iranian year which usually begins within a day of 21 March of the Gregorian calendar. To find the corresponding year of the Gregorian calendar, add 621 or 622 (depending on the time of the year) to a solar Hijri year. For example the corresponding year of the year 1396 in the Gregorian calendar is (21 March 2017 - 20 March 2018).

In the Name of Allah, the Compassionate, the Merciful

Verily, He has counted all creatures and He knows their exact number.

—Holy Quran

Sura *Maryam*, Verse 94

Symbols:

- Not collected
- 000 Not available
- × Not applicable
- ×× Not calculable
- // Negligible
- * Provisional
- ** Estimated figure
- ⊙ Not for publication (confidential figure)

Where figures are rounded, discrepancies may occur between sums of the components and the total. All ratios and indexes were calculated before rounding

Iranian month

Iranian month	Christian month
Farvardin	21 March – 20 April
Ordibehesht	21 April – 21 May
Khordad	22 May – 21 June
Tir	22 June – 22 July
Mordad	23 July – 22 August
Shahrivar	23 August – 22 September
Mehr	23 September – 22 October
Aban	23 October – 21 November
Azar	22 November – 21 December
Dey	22 December – 20 January
Bahman	21 January – 19 February
Esfand	20 February – 20 March

Preface

Collection and dissemination of statistics on livestock slaughter in the national slaughterhouses is one of the routine activities of the Statistical Centre of Iran which has begun since the year 1347 (1968). The statistical information which is provided in this way to planners, executive authorities and researchers, whenever combined with other available information on the geographical distribution of national population, imports and exports, and informal livestock slaughter, can be used in view of following points:

1. Calculation of per capita supply of red meat as one of the indexes of the socio-economic status.
2. Estimation of some of the statistical items related to livestock slaughter, such as hide, intestine, head, trotters and entrails of the livestock.
3. Average changes in carcass weight as an index for recognizing the status of the nation's pastures
4. Planning for probable meat imports and its appropriate distribution in the country.

One of the important characteristics of the livestock slaughter statistics in the national slaughterhouses is the continuity and speed of its collection and extraction process, of which the information obtained could be used for planning very quickly and at short intervals.

We would like to express our appreciation to the veterinary networks, national slaughterhouses and the Provincial Plan and Budget Organization for their sincere cooperation in implementing this survey. All researchers and well-informed people are expected to provide us with their own comments in order to improve this publication.

Statistical Centre of Iran

Table of Contents

Title	Page
Introduction	5
General characteristics of the survey – the year 1396	6
Summary statistics on livestock slaughter in the national slaughterhouses – the year 1396	8
A glance at the trend of changes in the livestock slaughter statistics in the national slaughterhouses (the years 1387-1396)	9
A. Number of edible carcasses of livestock types slaughtered in the national slaughterhouses: the years 1387-1396	10
B. Index changes in edible carcasses number of livestock types slaughtered in the national slaughterhouses: the years 1388-1396	10
C. Weight of edible carcasses of livestock types slaughtered in the national slaughterhouses: the years 1387-1396	11
D. Index changes in the weight of edible carcasses of livestock types slaughtered in the national slaughterhouses: the years 1388-1396	11
Charts	12
Statistical Tables	
1. Number of livestock types slaughtered in the national slaughterhouses by season and month: the year 1396	20
2. Weight of livestock types slaughtered in the national slaughterhouses by season and month: the year 1396	21
3. Average weight of carcass for one head of livestock types slaughtered in the national slaughterhouses by season and month: the year 1396	22
4. Number and weight of sheep and lambs slaughtered in the national slaughterhouses by province: the year 1396	23
5. Number and weight of goat and kids slaughtered in the national slaughterhouses by province: the year 1396	24
6. Number and weight of cattle and calves slaughtered in the national slaughterhouses by province: the year 1396	25
7. Number and weight of buffalo and calves slaughtered in the national slaughterhouses by province: the year 1396	26
8. Number and weight of camel and calves slaughtered in the national slaughterhouses by province: the year 1396	27

Introduction

The first statistical publication on livestock slaughter in Iran was published by the Ministry of Economy in the month of Khordad (22 May – 21 June) of the year 1344 containing statistics on livestock slaughter for the years 1338 to 1343 in the cities with a population of over 5,000 people based on the Population and Housing Census conducted in the year 1335. Since then until the year 1346, livestock slaughter statistics would be prepared by the General Department of the mentioned Ministry. Since the year 1347, the livestock slaughter survey implementation has been ceded to the Statistical Centre of Iran. Until the year 1375, the mentioned statistics were collected through correspondence or direct visit to the municipalities throughout the country by this Centre. However, since the year 1376 and due to the expression of the readiness by the Veterinary Organization for cooperation in this field, all slaughterhouses covered by the veterinary networks were enumerated. To implement this survey, a questionnaire along with its completion instruction is provided to the officials of the slaughterhouses via the Provincial Plan and Budget Organization until the year 1395. Since the beginning of the year 1396, all survey implementation stages such as the data entry, checking, correcting, and sending of the survey data have been done through the web-based Integrated Electronic Data Collection System (known as SIJAD).

In using statistics of the current publication, following points should be taken into account:

- (A) The statistics do not include the information on livestock slaughter in the rural areas out of the veterinary network coverage.
- (B) The presented statistics exclude the information on unauthorized livestock slaughter in cities.
- (C) Authorized slaughterhouses in private sector are included in this survey.
- (D) The statistics on the livestock slaughter in private slaughterhouses in each province is presented under the title of "Other slaughterhouses" in the last line of table" related to each province.
- (E) The unit for camel in the related tables is "head".

General Characteristics of the Survey

Background

The survey of livestock slaughter statistics in the national slaughterhouses is one of the routine activities of the Statistical Centre of Iran, which has been implemented since the year 1347 so far and related results have been published.

The Necessity of the Survey Implementation

The statistical information which is provided in this way to planners, executive authorities and researchers throughout the country can be used from the following viewpoints whenever combined with other available information on geographical distribution, population, imports and exports of livestock and meat products:

- Calculation of per capita supply of red meat as one of the indexes of the socio-economic status.
- Estimation of some of the statistical items related to livestock slaughter, such as hide, intestine, head, trotters and entrails of the livestock or the number of livestock available in the country.
- Use of carcass average weight changes as an index to recognize the status of national pastures.
- Planning for importing red meat and its appropriate distribution in the country.
- Meeting of statistical requirements of economic accounts.
- Meeting of statistical requirements of other organizations.

Objectives of the Survey

A) General objectives: the overall objective of this survey is to collect and provide information needed for planning, policy-making, research, supervision and management of executive operations in the field of livestock slaughter in the national authorized slaughterhouses.

B) Detailed objectives: total number of livestock slaughter, total carcass weight and average weight of one head of slaughtered sheep and lambs, goat and kids, cattle and calves, buffalo and calves and camel and calves, number, weight and average weight of the confiscated carcasses of sheep and lambs, goat and kids, cattle and calves, buffalo and calves, and camel and calves.

Type of the Survey

The method of this survey is complete enumeration.

Statistical Frame

The list of slaughterhouses, whether public and private, which are officially authorized by the National Veterinary Organization in the year 1396, is the statistical frame of this survey.

Statistical Population

All national authorized slaughterhouses in the year 1396 form the statistical population of this survey.

Statistical Unit

The statistical unit of the survey is a national authorized slaughterhouse.

Survey Date

The time for taking this survey is the end of each month.

Statistical Date

The statistical time for implementing this survey is every month of the year.

Level of Information Dissemination

The statistics and information collected will be presented at the national and provincial levels.

Summary Statistics on Livestock Slaughter in the National Slaughterhouses – the Year 1396

The survey of livestock slaughter statistics collection in the national slaughterhouses is one of the routine activities of the Statistical Centre of Iran, which has begun since the year 1347 (1968).

A summary of the livestock slaughter statistics in the year 1396 is as follows:

- The amount of red meat production in the national slaughterhouses was 429 thousand tons by the weight of slaughtered carcasses.
- The number of edible carcasses of slaughtered sheep and lambs was 8609 thousand with the weight of 162 thousand tons, which the province of Tehran with the number of 1562 thousand carcasses with the weight of 24 thousand tons had the highest number of carcasses.
- The number of edible carcasses of slaughtered goat and kids was 2223 thousand with the weight of 34 thousand tons. Esfahan province with 504 thousand carcasses with the weight of 7 thousand tons had the highest number.
- The number of edible carcasses of slaughtered cattle and calves was 1134 thousand with the weight of 223 thousand tons and the highest number was for Tehran province with 204 thousand carcasses with the weight of 35 thousand tons.
- The number of edible carcasses of slaughtered buffalo and calves was 22 thousand carcasses weighing 4 thousand tons. The province of Khuzestan had the highest number with 9 thousand carcasses with the weight of 1.8 thousand tons.
- The number of edible carcasses of slaughtered camel and calves was 33 thousand with the weight of 7 thousand tons. Sistan and Baluchestan province had the highest number with 7893 carcasses weighing 1.8 thousand tons.
- The average weight of a sheep and lambs carcass was 18.76 kg, goat and kids was 15.07 kg, cattle and calves was 196.56 kg, buffalo and calves was 189.18 kg, and camel and calves was 213.44 kg.

A comparative review of the survey results in the years 1395 and 1396 showed that the number of livestock slaughter in the year 1396 experienced a decrease compared with the year 1395. Performance comparison of livestock in the national slaughterhouses in the year 1396 over the year 1395 indicates a 4 percent reduction of quantity of meat production in the authorized livestock slaughterhouses. The quantity of meat production compared with the previous year experienced a decrease of 8 percent for sheep and lambs, 3 percent for goat and kids, 2 percent for cattle and calves, and 8 percent for buffalo and calves, and had a 37 percent increase for camel and calves.

A Glance at the Trend of Changes in the Livestock Slaughter Statistics in National Slaughterhouses (the years 1387-1396)

The statistics on the number and weight of edible carcasses of the livestock types slaughtered in the national slaughterhouses during the last ten years show that:

1. The lowest number of edible carcasses of slaughtered sheep and lambs was 4884 thousand with the weight of 90 thousand tons for the year 1389 and the highest number with 10236 thousand carcasses with the weight of 184 thousand tons was related to the year 1394, but this amount reached 8609 thousand carcasses with the weight of 162 thousand tons in the year 1396.
2. The lowest number of edible carcasses of slaughtered goats and kids was 1749 thousand with the weight of 25 thousand tons for the year 1389 and the highest number with 2552 thousand carcasses with the weight of 37 thousand tons was related to the year 1394, but this amount reached 2223 thousand carcasses with the weight of 34 thousand tons in the year 1396.
3. The lowest number of edible carcasses of slaughtered cattle and calves was 1035 thousand with the weight of 198 thousand tons for the year 1392 and the highest number with 1578 thousand carcasses with the weight of 269 thousand tons was related to the year 1387, but this amount reached 1134 thousand carcasses with the weight of 223 thousand tons in the year 1396.
4. The lowest number of edible carcasses of slaughtered buffalo and calves was 20 thousand with the weight of 3 thousand tons for the year 1389 and 1392, and the highest number with 47 thousand carcasses with the weight of 8 thousand tons was related to the year 1388, but this amount reached 22 thousand carcasses with the weight of 4 thousand tons in the year 1396.
5. The lowest number of edible carcasses of slaughtered camel and calves was 19 thousand with the weight of 4 thousand tons for the year 1393 and the highest number with 45 thousand carcasses with the weight of 10 thousand tons was related to the year 1388, but this amount reached 33 thousand carcasses with the weight of 7 thousand tons in the year 1396.

A. NUMBER OF EDIBLE CARCASSES OF LIVESTOCK TYPES SLAUGHTERED IN THE NATIONAL SLAUGHTERHOUSES: THE YEARS 1387-1396

(thousand carcasses)

Year	Sheep & lambs	Goat & kids	Cattle & calves	Buffalo & calves	Camel & calves
1387	10038	2416	1578	47	34
1388	6446	1913	1432	31	45
1389	4884	1749	1235	20	29
1390	5673	1842	1382	26	27
1391	6828	2129	1378	32	26
1392	7450	2206	1035	20	24
1393	9196	2504	1126	28	19
1394	10236	2552	1278	29	22
1395	9709	2388	1183	24	24
1396	8609	2223	1134	22	33

B. INDEX CHANGES IN EDIBLE CARCASSES NUMBER OF LIVESTOCK TYPES SLAUGHTERED IN THE NATIONAL SLAUGHTERHOUSES: THE YEARS 1388-1396

(1387=100)

Year	Sheep & lambs	Goat & kids	Cattle & calves	Buffalo & calves	Camel & calves
1388	64	79	91	66	131
1389	49	72	78	43	85
1390	57	76	88	55	78
1391	68	88	87	68	76
1392	74	91	66	43	71
1393	92	104	71	59	56
1394	102	106	81	62	65
1395	97	99	75	51	71
1396	86	92	72	47	96

**C. WEIGHT OF EDIBLE CARCASSES OF LIVESTOCK TYPES SLAUGHTERED
IN THE NATIONAL SLAUGHTERHOUSES: THE YEARS 1387-1396**
(thousand tons)

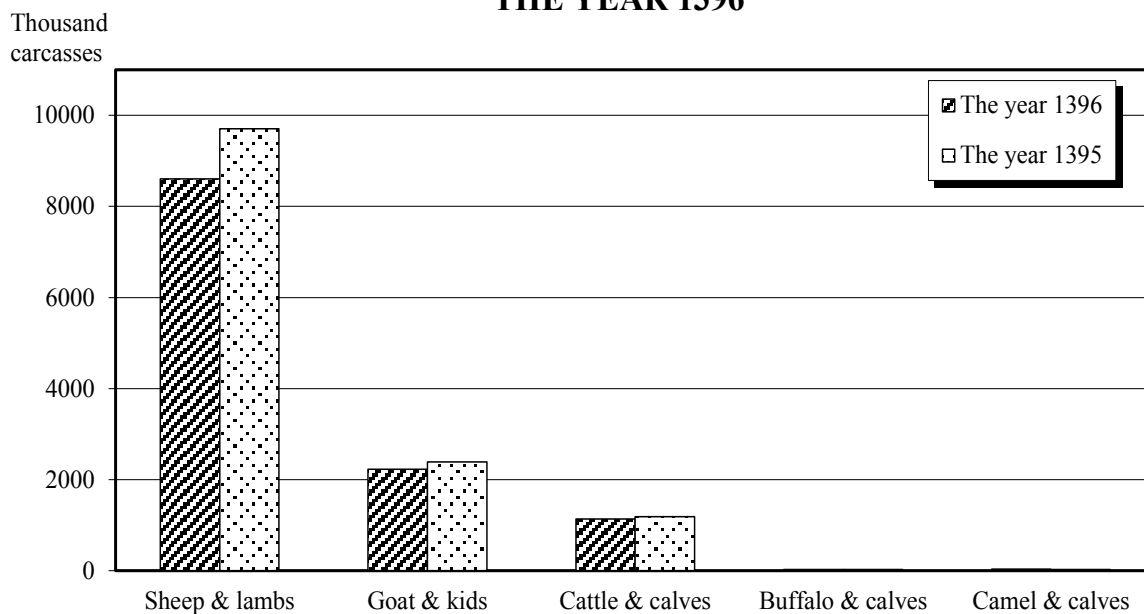
Year	Total	Sheep & lambs	Goat & kids	Cattle & calves	Buffalo & calves	Camel & calves
1387	487	170	33	269	8	7
1388	403	114	27	247	5	10
1389	347	90	25	222	3	6
1390	391	104	27	250	4	6
1391	416	126	32	248	5	5
1392	377	138	33	198	3	5
1393	425	165	37	214	5	4
1394	476	184	37	245	5	5
1395	448	176	35	228	5	5
1396	429	162	34	223	4	7

**D. INDEX CHANGES IN THE WEIGHT OF EDIBLE CARCASS OF LIVESTOCK
TYPES SLAUGHTERED IN THE NATIONAL SLAUGHTERHOUSES: THE
YEARS 1388-1396**
(1387 = 100)

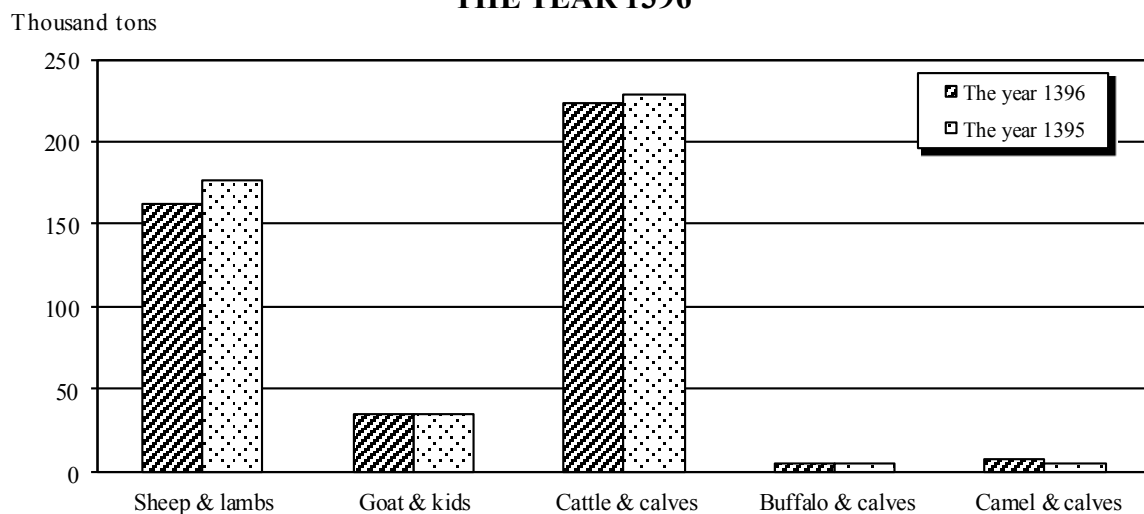
Year	Total	Sheep & lambs	Goat & kids	Cattle & calves	Buffalo & calves	Camel & calves
1388	83	67	82	92	64	143
1389	71	53	76	83	38	86
1390	80	61	82	93	50	86
1391	85	74	97	92	63	71
1392	77	81	100	74	38	71
1393	87	97	111	80	58	55
1394	98	108	112	91	63	71
1395	92	104	106	85	63	71
1396	88	95	102	83	52	100

Charts

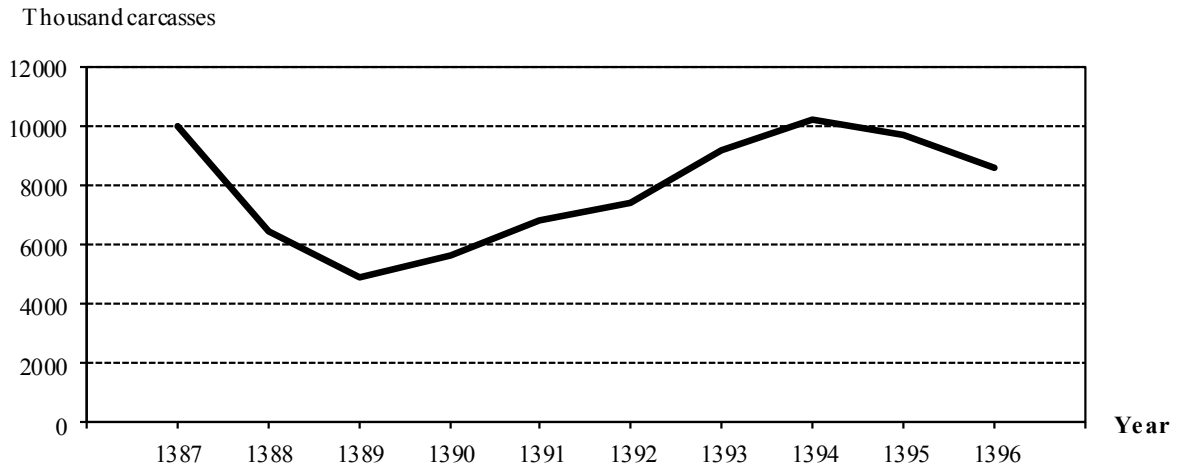
**NUMBER OF EDIBLE CARCASSES OF LIVESTOCK TYPES OF
SLAUGHTERED IN THE NATIONAL SLAUGHTERHOUSES:
THE YEAR 1396**



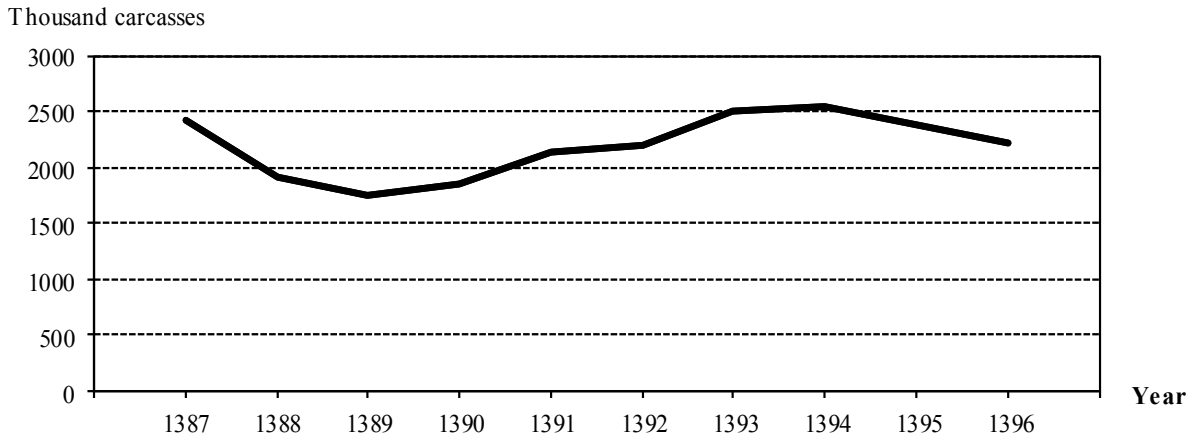
**WEIGHT OF EDIBLE CARCASSES OF LIVESTOCK TYPES
SLAUGHTERED IN THE NATIONAL SLAUGHTERHOUSES:
THE YEAR 1396**



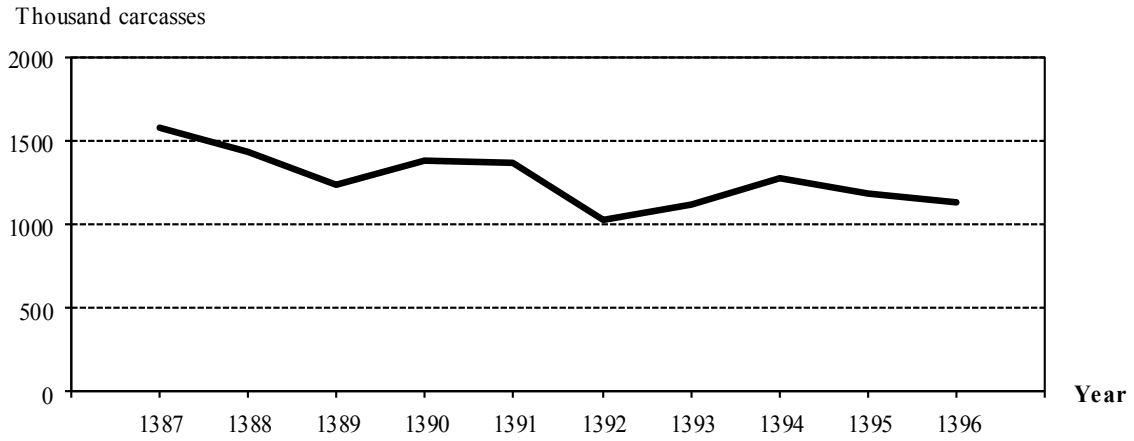
**NUMBER OF EDIBLE CARCASSES OF SHEEP AND LAMBS
SLAUGHTERED IN THE NATIONAL SLAUGHTERHOUSES:
THE YEARS 1387-1396**



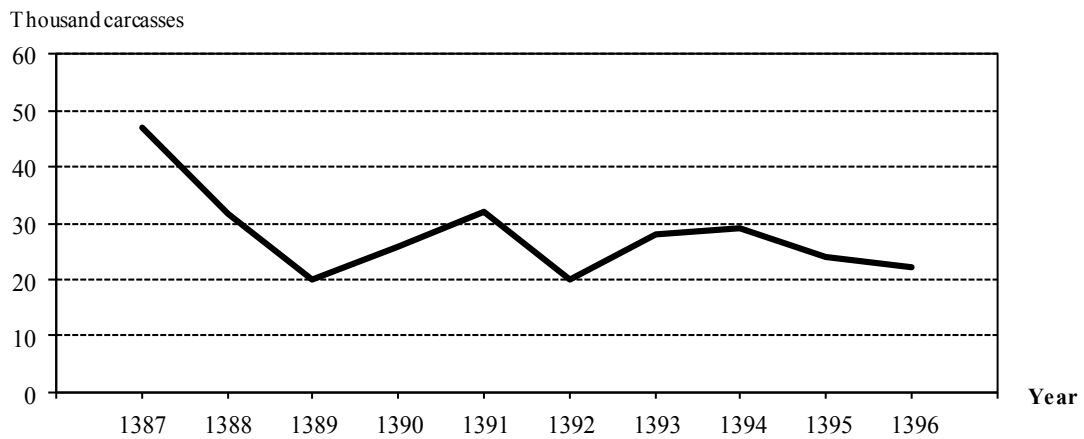
**NUMBER OF EDIBLE CARCASSES OF GOAT AND KIDS
SLAUGHTERED IN THE NATIONAL SLAUGHTERHOUSES:
THE YEARS 1387-1396**



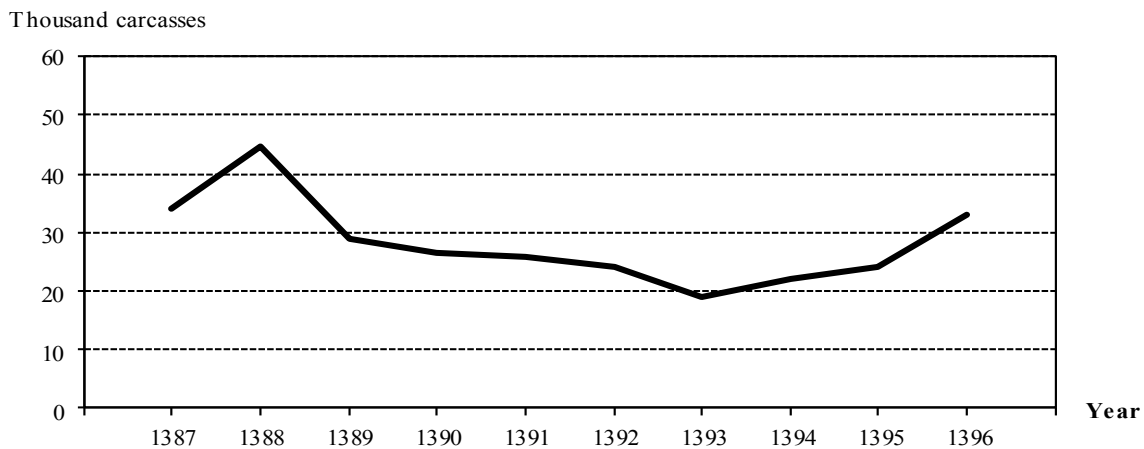
**NUMBER OF EDIBLE CARCASSES OF CATTLE AND CALVES
SLAUGHTERED IN THE NATIONAL SLAUGHTERHOUSES:
THE YEARS 1387-1396**



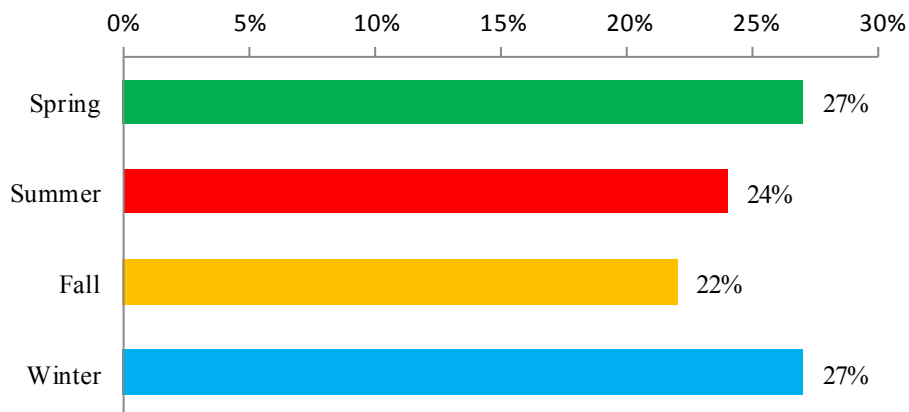
**NUMBER OF EDIBLE CARCASSES OF BUFFALO AND CALVES
SLAUGHTERED IN THE NATIONAL SLAUGHTERHOUSES:
THE YEARS 1387-1396**



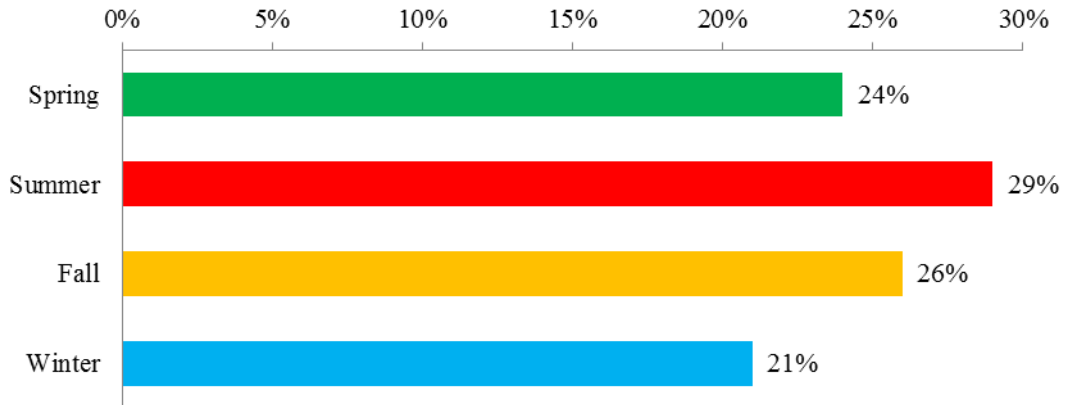
**NUMBER OF EDIBLE CARCASSES OF CAMEL AND CALVES
SLAUGHTERED IN THE NATIONAL SLAUGHTERHOUSES:
THE YEARS 1387-1396**



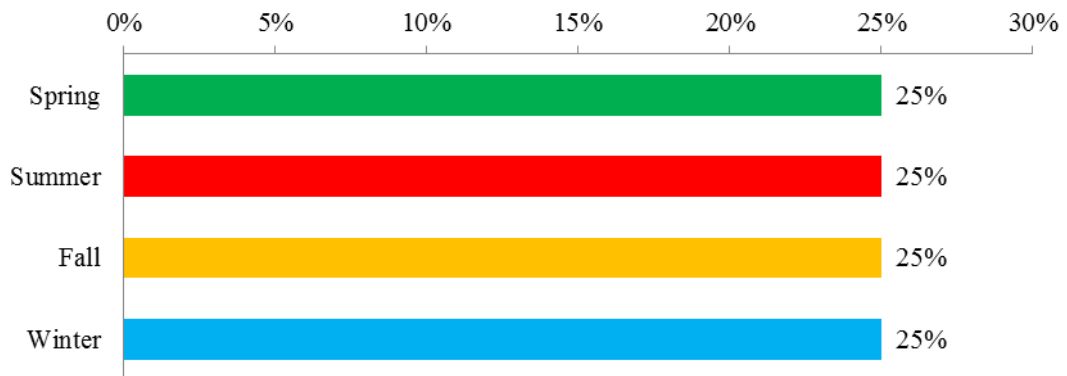
**SHEEP AND LAMBS SLAUGHTERING IN
DIFFERENT SEASONS: THE YEAR 1396**



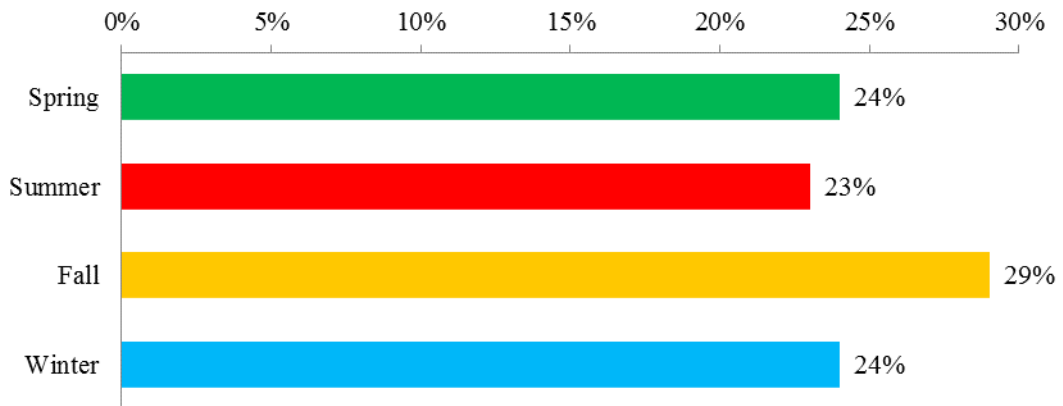
GOAT AND KIDS SLAUGHTERING IN DIFFERENT SEASONS: THE YEAR 1396



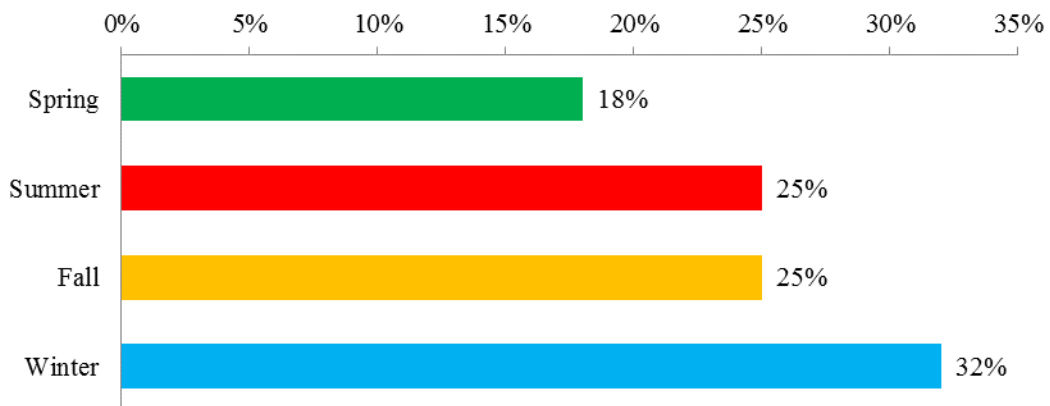
CATTLE AND CALVES SLAUGHTERING IN DIFFERENT SEASONS: THE YEAR 1396



BUFFALO AND CALVES SLAUGHTERING IN DIFFERENT SEASONS: THE YEAR 1396



CAMEL AND CALVES SLAUGHTERING IN DIFFERENT SEASONS: THE YEAR 1396



Statistical Tables

1. NUMBER OF LIVESTOCK TYPES SLAUGHTERED IN THE NATIONAL SLAUGHTERHOUSES BY SEASON AND MONTH: THE YEAR 1396 (head)

Description	Sheep & lambs	Goat & kids	Cattle & calves	Buffalo & calves	Camel & calves
Total year	8609118	2223110	1134123	21970	32752
Spring	2359906	523159	279117	5385	5881
Farvardin.....	660245	139173	86030	1672	1613
Ordibehesht.....	816430	179839	95215	1918	1917
Khordad	883231	204147	97872	1795	2351
Summer	2280559	653100	286147	4956	8004
Tir	770355	203555	90350	1521	2462
Mordad	804287	234572	98437	1732	2914
Shahrivar.....	705917	214973	97360	1703	2628
Autumn	1885327	585945	288018	6329	8301
Mehr	613475	204710	102101	1993	2742
Aban	619950	195711	93889	1927	2579
Azar	651902	185524	92028	2409	2980
Winter	2083326	460906	280841	5300	10566
Dey	630417	161360	87513	1645	3219
Bahman.....	639994	137111	87770	1704	3529
Esfand	812915	162435	105558	1951	3818

2. WEIGHT OF LIVESTOCK TYPES SLAUGHTERED IN THE NATIONAL SLAUGHTERHOUSES BY SEASON AND MONTH: THE YEAR 1396 (kg)

Description	Sheep & lambs	Goat & kids	Cattle & calves	Buffalo & calves	Camel & calves
Total year.....	161535294	33501720	222923523	4160933	6990603
Spring	42788638	7604479	54530725	1023078	1229065
Farvardin.....	12106042	2025141	16831423	317049	340227
Ordibehesht.....	14542030	2594152	18641596	366288	399558
Khordad	16140566	2985186	19057706	339741	489280
Summer	42169162	10170362	56194862	938725	1685079
Tir	13977906	3034052	17815537	286640	510553
Mordad	14947937	3849690	19240126	330387	625944
Shahrivar.....	13243319	3286620	19139199	321698	548582
Autumn	36359113	8811966	56560854	1182916	1726499
Mehr	11607409	3091987	20000166	379169	557100
Aban	12053039	2883550	18511714	340913	527324
Azar	12698665	2836429	18048974	462834	642075
Winter	40218381	6914913	55637082	1016214	2349960
Dey	12162441	2452913	17177427	313919	708087
Bahman.....	12414364	2057254	17447304	324409	784950
Esfand	15641576	2404746	21012351	377886	856923

**3. AVERAGE WEIGHT OF CARCASS FOR ONE HEAD OF LIVESTOCK TYPES
SLAUGHTERED IN THE NATIONAL SLAUGHTERHOUSES BY SEASON AND
MONTH: THE YEAR 1396 (kg)**

Description	Sheep & lambs	Goat & kids	Cattle & calves	Buffalo & calves	Camel & calves
Total	18.76	15.07	196.56	189.39	213.44
Spring	18.13	14.54	195.37	189.99	208.99
Farvardin.....	18.34	14.55	195.65	189.62	210.93
Ordibehesht.....	17.81	14.42	195.78	190.97	208.43
Khordad	18.27	14.62	194.72	189.27	208.12
Summer	18.49	15.57	196.38	189.41	210.53
Tir	18.14	14.91	197.18	188.45	207.37
Mordad	18.59	16.41	195.46	190.75	214.81
Shahrivar.....	18.76	15.29	196.58	188.90	208.75
Autumn	19.29	15.04	196.38	186.90	207.99
Mehr	18.92	15.10	195.89	190.25	203.17
Aban	19.44	14.73	197.17	176.91	204.47
Azar	19.48	15.29	196.12	192.13	215.46
Winter	19.30	15.00	198.11	191.74	222.41
Dey	19.29	15.20	196.28	190.83	219.97
Bahman.....	19.40	15.00	198.78	190.38	222.43
Esfand	19.24	14.80	199.06	193.69	224.44

4. NUMBER AND WEIGHT OF SHEEP AND LAMBS SLAUGHTERED IN THE NATIONAL SLAUGHTERHOUSES BY PROVINCE: THE YEAR 1396

Province	Number	Percent	Weight (kg)	Percent
Total country	8609118	100.00	161535294	100.00
East Azarbayejan	349158	4.06	6976351	4.32
West Azarbayejan.....	61839	0.72	1286641	0.80
Ardebil.....	180483	2.10	3720927	2.30
Esfahan.....	1491952	17.33	26198547	16.22
Alborz.....	169911	1.97	2706163	1.68
Ilam	35211	0.41	750125	0.46
Bushehr.....	8091	0.09	112270	0.07
Tehran	1561823	18.14	23756349	14.71
Chaharmahal & Bakhtiyari	160967	1.87	3838245	2.38
South Khorasan.....	37470	0.44	799272	0.49
Khorasan-e-Razavi.....	1515958	17.61	36629976	22.68
North Khorasan	50210	0.58	1101807	0.68
Khuzestan	386389	4.49	5408890	3.35
Zanjan	33759	0.39	733394	0.45
Semnan.....	110648	1.29	1961533	1.21
Sistan & Baluchestan	5451	0.06	88818	0.05
Fars.....	274899	3.19	5473308	3.39
Qazvin.....	100134	1.16	1505397	0.93
Qom.....	445089	5.17	8011602	4.96
Kordestan.....	42499	0.49	968594	0.60
Kerman	165066	1.92	2450860	1.52
Kermanshah.....	126095	1.46	2346140	1.45
Kohgiluyeh & Boyerahmad	68022	0.79	1076468	0.67
Golestan.....	210705	2.45	3377251	2.09
Gilan	89005	1.03	1637961	1.01
Lorestan	180358	2.09	3502958	2.17
Mazandaran	299845	3.48	5097696	3.16
Markazi.....	106278	1.23	2680139	1.66
Hormozgan.....	20303	0.24	297406	0.18
Hamedan.....	169642	1.97	3601552	2.23
Yazd.....	151858	1.76	3438654	2.13

5. NUMBER AND WEIGHT OF GOAT AND KIDS SLAUGHTERED IN THE NATIONAL SLAUGHTERHOUSES BY PROVINCE: THE YEAR 1396

Province	Number	Percent	Weight (kg)	Percent
Total country	2223110	100.00	33501720	100.00
East Azarbayejan	19242	0.87	347309	1.04
West Azarbayejan.....	16995	0.76	239890	0.72
Ardebil.....	8228	0.37	126222	0.38
Esfahan.....	504350	22.69	7116062	21.24
Alborz.....	6285	0.28	93292	0.28
Ilam	12440	0.56	204852	0.61
Bushehr.....	18851	0.85	224615	0.67
Tehran	28549	1.28	359940	1.07
Chaharmahal & Bakhtiari	30764	1.38	538445	1.61
South Khorasan.....	17865	0.80	312929	0.93
Khorasan-e-Razavi.....	76058	3.42	1319110	3.94
North Khorasan	30019	1.35	476801	1.42
Khuzestan	189581	8.53	2125657	6.34
Zanjan.....	4781	0.22	74954	0.22
Semnan.....	53603	2.41	1013868	3.03
Sistan & Baluchestan	3730	0.17	59430	0.18
Fars.....	400998	18.04	6227694	18.59
Qazvin.....	11323	0.51	151100	0.45
Qom.....	82758	3.72	1492824	4.46
Kordestan.....	12190	0.55	189244	0.56
Kerman	120622	5.43	1411923	4.21
Kermanshah.....	15307	0.69	256109	0.76
Kohgiluyeh & Boyerahmad	85834	3.86	1096073	3.27
Golestan.....	18110	0.81	271168	0.81
Gilan	73407	3.30	1254423	3.74
Lorestan.....	33107	1.49	504481	1.51
Mazandaran	106530	4.79	1445430	4.31
Markazi.....	70658	3.18	1590053	4.75
Hormozgan.....	32561	1.46	389149	1.16
Hamedan.....	30308	1.36	643584	1.92
Yazd.....	108056	4.86	1945089	5.81

6. NUMBER AND WEIGHT OF CATTLE AND CALVES SLAUGHTERED IN THE NATIONAL SLAUGHTERHOUSES BY PROVINCE: THE YEAR 1396

Province	Number	Percent	Weight (kg)	Percent
Total country	1134123	100.00	222923523	100.00
East Azarbayejan	67077	5.91	13953868	6.26
West Azarbayejan.....	47024	4.15	9240506	4.15
Ardebil.....	26944	2.38	4720128	2.12
Esfahan.....	57262	5.05	14589925	6.54
Alborz.....	23088	2.04	5681079	2.55
Ilam	4746	0.42	931218	0.42
Bushehr.....	3552	0.31	555662	0.25
Tehran	204008	17.99	35304216	15.84
Chaharmahal & Bakhtiari	9814	0.87	2136970	0.96
South Khorasan.....	3978	0.35	804897	0.36
Khorasan-e-Razavi.....	81079	7.15	20490275	9.19
North Khorasan	6633	0.58	1710185	0.77
Khuzestan	48195	4.25	7233320	3.24
Zanjan.....	18782	1.66	4461211	2.00
Semnan.....	6933	0.61	1595125	0.72
Sistan & Baluchestan	72320	6.38	15426179	6.92
Fars.....	44725	3.94	11002577	4.94
Qazvin.....	33315	2.94	6966099	3.12
Qom.....	8963	0.79	1792600	0.80
Kordestan.....	31053	2.74	5807847	2.61
Kerman	32954	2.91	5378259	2.41
Kermanshah.....	35320	3.11	4619665	2.07
Kohgiluyeh & Boyerahmad	2398	0.21	543825	0.24
Golestan.....	14273	1.26	2553460	1.15
Gilan	74612	6.58	12075719	5.42
Lorestan.....	39322	3.47	7795533	3.50
Mazandaran	66216	5.84	11024579	4.95
Markazi.....	26401	2.33	6004997	2.69
Hormozgan.....	12885	1.14	1591087	0.71
Hamedan.....	24489	2.16	5266872	2.36
Yazd.....	5762	0.51	1663640	0.75

7. NUMBER AND WEIGHT OF BUFFALO AND CALVES SLAUGHTERED IN THE NATIONAL SLAUGHTERHOUSES BY PROVINCE: THE YEAR 1396

Province	Number	Percent	Weight (kg)	Percent
Total country	21970	100.00	4160933	100.00
East Azarbayejan	5607	25.52	1093473	26.30
West Azarbayejan.....	3999	18.20	698553	16.80
Ardebil.....	2066	9.40	353024	8.49
Esfahan.....	7	0.03	1500	0.04
Alborz.....	0	0.00	0	0.00
Ilam	0	0.00	0	0.00
Bushehr.....	0	0.00	0	0.00
Tehran	0	0.00	0	0.00
Chaharmahal & Bakhtiari	38	0.17	6900	0.17
South Khorasan.....	0	0.00	0	0.00
Khorasan-e-Razavi.....	0	0.00	0	0.00
North Khorasan	0	0.00	0	0.00
Khuzestan	9049	41.18	1809400	43.52
Zanjan	0	0.00	0	0.00
Semnan.....	0	0.00	0	0.00
Sistan & Baluchestan	0	0.00	0	0.00
Fars.....	81	0.37	15255	0.37
Qazvin.....	0	0.00	0	0.00
Qom.....	0	0.00	0	0.00
Kordestan.....	0	0.00	0	0.00
Kerman	0	0.00	0	0.00
Kermanshah.....	0	0.00	0	0.00
Kohgiluyeh & Boyerahmad	0	0.00	0	0.00
Golestan.....	7	0.03	1150	0.03
Gilan	1116	5.08	181678	4.37
Lorestan	0	0.00	0	0.00
Mazandaran	0	0.00	0	0.00
Markazi.....	0	0.00	0	0.00
Hormozgan.....	0	0.00	0	0.00
Hamedan.....	0	0.00	0	0.00
Yazd.....	0	0.00	0	0.00

8. NUMBER AND WEIGHT OF CAMEL AND CALVES SLAUGHTERED IN THE NATIONAL SLAUGHTERHOUSES BY PROVINCE: THE YEAR 1396

Province	Number	Percent	Weight (kg)	Percent
Total country	32752	100.00	6990603	100.00
East Azarbayejan	55	0.17	13039	0.19
West Azarbayejan.....	0	0.00	0	0.00
Ardebil.....	0	0.00	0	0.00
Esfahan.....	4901	14.96	1347807	19.28
Alborz.....	0	0.00	0	0.00
Ilam	0	0.00	0	0.00
Bushehr.....	23	0.07	2810	0.04
Tehran	141	0.43	22485	0.32
Chaharmahal & Bakhtiari	166	0.51	28650	0.41
South Khorasan.....	1242	3.79	170400	2.44
Khorasan-e-Razavi.....	1509	4.61	241554	3.46
North Khorasan	83	0.25	20275	0.29
Khuzestan	141	0.43	21150	0.30
Zanjan.....	0	0.00	0	0.00
Semnan.....	1078	3.29	201696	2.89
Sistan & Baluchestan	7893	24.10	1822631	26.07
Fars.....	1905	5.82	318242	4.55
Qazvin.....	4	0.01	1129	0.02
Qom.....	303	0.93	54540	0.78
Kordestan.....	0	0.00	0	0.00
Kerman	6100	18.62	1040859	14.89
Kermanshah.....	0	0.00	0	0.00
Kohgiluyeh & Boyerahmad	9	0.03	1790	0.03
Golestan.....	402	1.23	53090	0.76
Gilan	0	0.00	0	0.00
Lorestan.....	0	0.00	0	0.00
Mazandaran	0	0.00	0	0.00
Markazi.....	0	0.00	0	0.00
Hormozgan.....	1457	4.45	204465	2.92
Hamedan.....	0	0.00	0	0.00
Yazd.....	5340	16.30	1423991	20.37