

Introduction

Statistics presented in this chapter are on transport (land, water, and air), storage. Below you will find a brief history on statistics production on each mentioned area.

Land transport

A. Railways: In the year 1324, the Iranian State Railways for the first time established a statistical unit as the Statistics and Studies Office to meet its statistical needs for planning.

At present, the Business Intelligence and Data Mining Bureau of the Railways of the Islamic Republic of Iran compiles and publishes required statistics annually based on the daily and monthly reports from different regions and districts.

B. Road transport: The oldest data on the length of main roads available to the Statistical Centre of Iran (SCI) date back to the year 1340 which appeared in the first statistical yearbook in the year 1345. At present, data on roads are produced by the Statistics and Plan Integration and Monitoring Plans Bureau of the Ministry of Roads and Urban Development. By transferring the responsibility of construction and maintenance of rural roads from the Ministry of Roads and Transportation to the then Ministry of Jihad-e-Sazandegi (present Ministry of Agriculture-Jahad) in the (year 1368, data on rural roads were collected and supplied by this

Ministry. However, as of the month of Tir of the year 1381, the Ministry of Roads and Transportation was entrusted with the responsibility of "rural roads" activities again, but currently, the information is supplied by the Office of Statistics and Plan Integration of the Ministry of Roads and Transportation.

Moreover, statistics on the number of registered motor vehicles from the Police Department are presented in this chapter.

No comprehensive statistics on the volume of transport and motor vehicle traffic in public roads were available until the year 1341 when the Ministry of Roads and Transportation produced such data for the first time. However, due to different problems and obstacles in the way of its implementation, the activity had temporarily stopped. Due to increasing needs for statistical data in this area, the responsibility of data collection was first entrusted to the Statistics and Planning Office of the State Organization of Transportation and Terminals in 1361 and then shifted to its IT office in the second midyear 1376. The organization was renamed Road Maintenance & Transportation Organization in the year 1382.

In the year 1366, to solve some of the statistical shortages in this area, the SCI compiled data on characteristics of the road transport fleet, drivers,

and the carried freight by implementing the "Survey of Road Transport" summary results of which were presented in the previous yearbooks.

Water transport

Data on ports-mostly on the number and capacity of vessels entered and the duration of their stays were compiled through a statistical survey conducted by the Ports and Shipping Organization (PSO) for the first time in the year 1342. At present, the PSO compiles and publishes the data as registers.

Air transport

Statistics on air transport were taken into consideration by the establishment of the first local airline called National Iranian Airline in the year 1323, which was renamed the Airline of the I.R. of Iran following the Islamic Revolution. Other airlines were established after the victory of the Islamic Revolution, including Aseman in the year 1359, Iran-Air Tour, Payam, Caspian, Kish Air, Saha, and Safran in the year 1371, and Mahan Air in the year 1372. The data on local airlines are compiled by the Civil Aviation Organization (CAO).

Data on international airlines activities in Iran presented in this chapter are supplied to the Civil Aviation Organization by their agencies. The CAO provides the SCI with these data.

Storage

The SCI conducted a nationwide Census of Cold Storages and Survey of Establishments Rendering Storage Services in the years 1366 and 1370, respectively. In order to produce data on general characteristics of storage, the SCI undertook a nationwide Survey of Storages in the year 1373. Moreover, using the outcomes of the 1373 National Mining and Manufacturing Census, which were

updated and completed according to the data of the related organizations, the SCI conducted the Census of Warehouses and Cold Storages in the years 1377 and 1380. In the years 1382 and 1384, using the frame of the 1381 National Census of Establishments the SCI attempted to collect the stated data.

It should be noted that the 1377, 1380, 1382, 1384, 1387 and 1390 censuses covered only the independent or affiliated warehouses and cold storages that had rendered their services to the public. Data for wheat silos are from the Commerce Department of State Cereal Organization since the year 1374. The organization was renamed Iran Public Commerce on the 1st Esfand of the year 1382.

Definitions and concepts

Railway: This is the tracks for the transport of cargo and/or passengers by rail transport vehicles, which is divided into the main track and sidetrack.

Main tracks: lines that connect railway stations.

Side tracks: They are non-main tracks including commercial-industrial and shunting tracks.

Shunting tracks: They are side-tracks established for adjusting and separating wagons and locomotives for forming trains (shunting) in administrative railway stations.

Commercial-industrial lines of the railway: They are side-lines that, at the request of public or private manufacturing, agricultural and commercial units, branch off from the lines inside the railway station and are connected to the requesting units.

Locomotive: This is a vehicle with propelling power that is used to move wagons and classified

by type of energy consumption (electric, diesel, and steam) and use type (main and shunting).

Net weight of freight: It refers to the total weight of commercial and governmental freight (excluding the freight of the railway) as well as the weight of luggage.

Gross weight of freight: This is the total net weight of the freight as well as the weight of the train.

Railway luggage: It refers to the freight which is not allowed to be carried with the passengers in a wagon on the basis of railway regulation, but it is carried in a special wagon by passenger trains with the same name.

Freeway: It is a road with four lanes (two lanes on each side) for traveling motor vehicles whose round-trip routes are completely separated from each other with no at-grade intersections, and can be entered and exited at certain points. Passing pedestrians, bicycles, other non-motorized vehicles and in some cases, all or part of commercial vehicles are prohibited.

Highway: It is a road with at least four lanes (two lanes on each side) for passing motor vehicles whose round-trip routes are completely separated from each other and it is possible to create at-grade intersections and limited access to it (has at least one at-grade intersection).

Rural road: It refers to a way that connects rural production centres to by-roads and main roads.

Port: It is an area connecting land to sea comprising necessary facilities for mooring vessels in order to carry out the required operations.

Commercial port: It is a port in which trade goods are exclusively loaded and unloaded.

Vessel: It refers to any type of marine transport means which has the capability of safe maritime.

Ship: It refers to any vessel usually made of metal with an engine and a gross capacity of over 500 tons.

Gross registered capacity of a vessel: It is the capacity of the vessel in a ton (100 cubic feet) recorded in the related certificate under international regulations.

Net registered capacity of a vessel: is the rest of the gross registered capacity less the volume and space related to machinery, employees, warehouses and other space allocated to navigation as recorded in the related certificate under international regulations.

Tonnage: It is the weight of goods shipped with respect to their volumes. It refers to the goods whose specific weight is less than normal (bulky lightweight goods). According to sanctioned tariffs, a certain volume of goods is considered equivalent to one ton and fare must be paid for one ton.

Airport: It refers to a specific area on land or water, including buildings, facilities/ installations, and equipment installed on the land or water, all or part of which (by case) is used for landing, take-off, and movement of all types of aircraft and transporting air freight, passengers and postal cargo. It includes the domestic airport, air border airport, international airport, special airport, joint airport, and helicopter airport.

Flight: It refers to the motion of an airplane from one airport to another under a certain flight number, which may include one or more stages.

Domestic flight: It refers to the flight that is carried out between two airports within the territory of the country.

Air passenger: It refers to a person (excluding the pilot and the crew) who travels by plane under a certain flight number.

Domestic air passenger: It refers to an air passenger who flies between two airports within the territory of the country

International in-coming passenger: It refers to a person whose flight origin and destination are outside and inside the country, respectively.

International out-going passenger: It refers to a person whose flight origin is inside the country, and his/her destination is abroad.

Air cargo: It refers to the cargo with a bill of lading transported by aircraft, excluding freight carried by the passenger.

Air postal parcels: It refers to all postal parcels such as letters or post depository parcel delivered to the airlines.

Cooperative: see the definitions and concepts of the 5th chapter: "Agriculture, Forestry and Fisheries".

Transportation cooperatives: It refers to a company that is formed and registered via the membership of natural persons or non-government legal persons based on cooperative law to transport goods, passengers, or both by land, air, sea, and railway.

Establishment: It refers to a place or part of a place where economic activity is carried out under certain ownership.

Main activity of an establishment: It is an activity whose value added during the accounting period is more than the value-added of any other activity which is carried out in that workshop.

Storage: It refers to an enclosed area the whole or a part of which is allocated to warehousing.

Cold storage: It is a set of buildings and installations in which the conditions necessary for agricultural products, food stuff and other perishable articles or goods in terms of temperature, relative humidity, etc. are artificially provided. The cold storage can have one-circuit halls (one of the two modes of above zero or below zero) and two-circuit halls (both modes of above zero and below zero).

One and two-circuit hall: in one-circuit halls, the temperature is roughly fixed either below or above zero and is inconvertible from one point to the other point, while in a two-circuit hall, the temperature can be converted from one point to the other point, i.e. the circuit below or above zero can be used when necessary.

Silo: It is a type of warehouse for long-term storage of granular or powdered material in bulk, such as wheat silo.

Uncovered warehouse: It is a specific part of the establishment area that has no building or shed and is used uncovered for storing goods. Green space, parking lots and street layout inside the establishment area are not considered uncovered warehouse.

Conventional covered warehouses: some silos have conventional covered warehouses without any mechanized connection with the main silo. Cereals unloaded in these warehouses are transferred into the silo by truck or other vehicles.

Storage or cold storage in operation: refers to an establishment rendering warehousing or cold storage services during a year for at least 30 successive or non-successive days.

Operating storage or cold storage: It refers to an establishment rendering warehousing or cold

storage services during a year for at least 30 days and bearing charges for carrying out its activities as well as earning income.

Selected information

In the year 1399, the length of railway lines (main lines, shunting tracks, and industrial-commercial lines) was 15040 kilometers, which increased about 1.8 percent in comparison with the preceding year. In the year 1399, the number of passengers transported via railways was 11 million and 103 thousand persons.

In the year 1399, the length of the urban roads was 84801 kilometers and the length of the rural roads was 135545 kilometers.

In the same year, more than 1 million and 14 thousand motor vehicles were registered in the country which had a 2.2% increase in comparison with the preceding year.

In the year 1399, the number of passengers transported via public road passenger vehicles (bus,

minibus, and passenger vehicles) was over 92 million persons, the destination of 60.1% and 39.9% of whom was intra-province and inter-province, respectively.

In the year 1399, the volume of goods unloaded and loaded at the commercial ports of the country was about 57 and over 73 million tons, respectively, of which 70% were for unloading and 62% for loading non-oil goods.

In the year 1399, a number of 12722 thousand passengers were transported by the Iranian air travel agencies via both national and international flights at domestic airports, and the number of inbound travelers transported by the mentioned agencies was 12704 thousand persons.

12.1. LENGTH OF RAILWAYS BY TYPE**(km)**

Year	Main lines	Shunting tracks	Industrial-commercial lines
1380.....	7159	1308	788
1385.....	8595	1597	945
1390.....	9992	1827	966
1395.....	10475	1938	1024
1396.....	11061	1957	1059
1397.....	11461	1995	1073
1398.....	11659	2017	1103
1399.....	11728	2141	1171

Source: Railways of the Islamic Republic of Iran.

12.2. LOCOMOTIVES, PASSENGERS AND NET FREIGHT TRANSPORTED BY RAILWAYS

Year	Locomotives ⁽¹⁾		Passengers		Net freight	
	Number	Power (h.p.)	Number (1000 persons)	Man-kilometre (mln)	Weight (1000 tons)	Ton-kilometre (mln)
1380.....	277	711095	13111	8043	26392	14613
1385.....	360	1040400	21346	12549	32978	20542
1390.....	439	1294087	28560	17877	33104	21008
1395.....	556	1581881	23042	12982	40282	27243
1396.....	581	1666606	24480	13272	46766	30299
1397.....	583	1665191	28094	15239	50478	34859
1398.....	570	1637717	28599	14890	46976	33646
1399.....	537	1550237	11103	5184	50564	35963

1. Including average operating locomotives (in use) in the month of Esfand.

Source: Railways of the Islamic Republic of Iran.

12.3. WEIGHT OF FREIGHT TRANSPORTED BY THE RAILWAYS**(1000 tons)**

Year	Total ⁽¹⁾	Oil products	Minerals	Agricultural products	Food stuff	Industrial products	Luggage	Other
1380.....	26392	3109	11062	2041	416	4126	25	5613
1385.....	32978	4340	20452	1412	431	3614	32	2697
1390.....	33104	3176	23481	631	445	1631	52	3688
1395.....	40282	3521	28305	1368	888	3266	248	2685
1396.....	46766	3133	33055	1630	907	3976	165	3900
1397.....	50478	3725	36315	1587	989	4138	158	3566
1398.....	46976	3994	33579	1614	875	4129	235	2550
1399.....	50564	4540	33652	1964	1022	4277	208	4901

1. Including 559, 1546, 956, 1143, 1586, 1585, 622 and 807 thousand tons for transiting different cargos.

Source: Railways of the Islamic Republic of Iran.

12.4. TYPES OF ROADS WITHIN THE JURISDICTION OF THE MINISTRY OF ROADS AND URBAN DEVELOPMENT (km)

Year and Ostan	Grand total	Inter-city roads					
		Total	Free ways	High ways	Main roads	By-roads ⁽¹⁾	In-city road
1380	174559	80720	717	4267	21595	42050	12091
1385	176186	72611	1429	5468	21788	41129	2797
1390	206092	79829	2052	11652	22052	43258	815
1395	215560	87167	2401	16627	25538	42601	000
1396	216150	88012	2401	16820	25866	42926	000
1397 ⁽²⁾	221352	88873	2401	18122	25814	42536	000
1398 ^(2, 3, 4)	218112	84040	2503	18122	25814	37601	000
1399^(2, 4)	220344	84801	2726	19285	25195	37601	000
East Azarbayejan	9447	3081	262	567	872	1380	000
West Azarbayejan	8036	2707	35	422	499	1751	000
Ardebil	5380	1546	0	197	657	692	000
Esfahan	10074	5538	462	2038	1896	1142	000
Alborz	1346	431	121	92	146	72	000
Ilam	2775	1315	0	150	570	595	000
Bushehr	3888	1895	0	672	577	647	000
Tehran	2723	1128	320	467	242	100	000
Chaharmahal & Bakhtiari	3152	1381	0	266	761	354	000
South Khorasan	10656	3648	0	748	1210	1690	000
Khorasan-e-Razavi	14113	5569	111	1136	1254	3068	000
North Khorasan	3601	1194	0	202	405	588	000
Khuzestan	15693	6243	135	1137	2685	2286	000
Zanjan	6081	2434	200	114	340	1780	000
Semnan	3601	1622	30	691	389	512	000
Sistan & Baluchestan	12988	5532	0	299	1813	3420	000
Fars	16381	7824	0	1799	2525	3501	000
Qazvin	4638	1331	226	420	179	507	000
Qom	1466	749	229	240	146	134	000
Kordestan	5255	1604	0	325	675	604	000
Kerman	13908	6849	56	1975	1891	2927	000
Kermanshah	7019	2549	0	447	493	1609	000
Kohgiluyeh & Boyerahmad	4646	1692	0	203	439	1050	000
Golestan	4758	1290	0	284	724	282	000
Gilan	8899	1902	56	487	302	1058	000
Lorestan	7176	1805	104	478	665	558	000
Mazandaran	7274	2502	36	805	630	1031	000
Markazi	5594	1960	224	479	433	824	000
Hormozgan	9856	3202	34	703	748	1717	000
Hamedan	4895	1904	85	637	336	846	000
Yazd	5025	2374	0	805	693	876	000

12.4. TYPES OF ROADS WITHIN THE JURISDICTION OF THE MINISTRY OF ROADS AND URBAN DEVELOPMENT (continued) (km)

Year and Ostan	Rural roads		
	Total	Asphalted	Gravelled
1380.....	93839	45332	48507
1385.....	103575	64287	39288
1390.....	126263	95164	31099
1395.....	128394	103812	24581
1396.....	128138	104263	23875
1397 ⁽²⁾	132479	110318	22161
1398 ^(2, 3, 4)	134072	111423	22649
1399^(2, 4).....	135545	112966	22573
East Azarbayejan.....	6366	5656	711
West Azarbayejan.....	5329	4022	1306
Ardebil.....	3834	2798	1036
Esfahan.....	4536	4270	266
Alborz.....	915	792	123
Ilam.....	1460	1287	172
Bushehr.....	1993	1929	64
Tehran.....	1595	1581	13
Chaharmahal & Bakhtiyari.....	1771	1563	208
South Khorasan.....	7008	5798	1210
Khorasan-e-Razavi.....	8544	7301	1243
North Khorasan.....	2407	2044	362
Khuzestan.....	9450	8092	1358
Zanjan.....	3647	2996	651
Semnan.....	1980	1742	238
Sistan & Baluchestan.....	7456	5135	2321
Fars.....	8557	7613	944
Qazvin.....	3307	2635	671
Qom.....	717	646	71
Kordestan.....	3651	3001	649
Kerman.....	7059	6299	761
Kermanshah.....	4470	3458	1012
Kohgiluyeh & Boyerahmad.....	2954	2273	681
Golestan.....	3468	2821	647
Gilan.....	6997	5271	1726
Lorestan.....	5371	4088	1283
Mazandaran.....	4772	4424	347
Markazi.....	3634	3261	373
Hormozgan.....	6654	5102	1552
Hamedan.....	2992	2781	210
Yazd.....	2651	2287	364

1. Since the year 1395, statistics related to intra-city roads are included with the statistics for "by-roads".

2. Since some roads were put under the jurisdiction of municipalities in some Ostans, the length of roads in these Ostans has decreased.

3. Including information on operating freeways whether finished or about to finish such as Orumiye-Tabriz freeway (parts one and four, totally 60 kilometers), Hemmat-Karaj freeway (parts two and three totally 8.9 kilometers), and Tehran- North freeway (part one, totally 32 kilometers).

4. Length of by-roads was calculated based on the outcomes obtained from the PMS system.

Source: Ministry of Roads and Urban Development

12.5. REGISTERED MOTOR VEHICLES AND MOTORCYCLES BY TYPE (unit)

Year and Ostan	Motor vehicles						
	Total	Tow truck	Taxi	Passenger	Truck	Bus	Kei truck
1385.....	1096469	9726	26739	885636	15557	3338	29205
1390.....	1662023	12336	41012	1384496	21412	2760	5626
1395.....	1445351	6060	48621	1265497	10323	1259	1970
1396.....	1599087	5390	16004	1463182	7850	1476	17351
1397.....	952776	4276	2558	846646	4860	789	23203
1398.....	991837	1248	4294	823555	2805	348	33631
1399.....	1014071	1613	8498	812452	3553	313	33878
East Azarbayejan.....	41525	104	141	31569	253	13	1694
West Azarbayejan	38345	17	280	27740	46	0	1814
Ardebil	19631	29	172	11868	33	1	889
Esfahan	72691	207	386	58946	250	22	1863
Alborz	32170	77	901	27861	158	37	816
Ilam	8747	5	99	7091	20	0	592
Bushehr	12845	3	0	10487	49	0	432
Tehran	218424	435	3241	197723	1153	126	4221
Chaharmahal & Bakhtiari	14158	38	46	9776	36	0	741
South Khorasan	10255	16	19	8281	17	0	316
Khorasan-e-Razavi.....	69945	45	574	56074	139	0	2133
North Khorasan	9543	27	24	5745	18	0	451
Khuzestan.....	44599	35	133	37432	98	0	1321
Zanjan	13834	22	74	8791	64	0	664
Semnan	10663	11	62	8987	10	0	317
Sistan & Baluchestan	12106	9	18	9368	74	3	963
Fars	85670	259	157	74832	488	55	3802
Qazvin	16775	10	215	12104	62	0	647
Qom.....	24383	18	155	21994	29	1	720
Kordestan	19515	20	182	10188	31	2	405
Kerman	26996	49	207	18341	124	20	612
Kermanshah	29857	26	290	22234	61	2	1007
Kohgiluyeh & Boyerahmad	4708	1	16	3912	11	0	233
Golestan	24745	22	157	15391	18	0	829
Gilan.....	17007	15	263	14456	59	0	730
Lorestan	19406	26	109	13151	33	2	815
Mazandaran	28324	18	306	23471	52	0	1501
Markazi	19677	12	16	13826	45	0	697
Hormozgan	17354	21	4	15160	21	1	869
Hamedan	30621	11	159	19523	55	13	1111
Yazd	19552	25	92	16130	46	15	673

12.5. REGISTERED MOTOR VEHICLES AND MOTORCYCLES BY TYPE (continued) (unit)

Year and Ostan	Motor vehicles					Motor-cycle
	Minibus	Pick-up	Ambulance	Agricultural machinery	Other	
1385.....	1497	121684	482	000	2605	000
1390.....	2658	180049	1797	6319	3558	000
1395.....	928	80076	606	25730	4281	736953
1396.....	851	58415	774	22791	5003	153119
1397.....	891	29721	559	2287	36986	164525
1398.....	558	35277	243	3269	86609	116974
1399.....	419	43954	260	6171	102960	209819
East Azarbayejan	7	1433	1	178	6132	2784
West Azarbayejan	9	1352	12	1402	5673	1167
Ardebil	0	550	11	355	5723	134
Esfahan	9	3344	3	156	7505	25580
Alborz	3	1162	10	50	1095	4640
Ilam	3	226	0	16	695	82
Bushehr	31	790	4	5	1044	3800
Tehran	213	10222	106	10	974	89286
Chaharmahal & Bakhtiyari	1	783	3	27	2707	777
South Khorasan	5	495	0	14	1092	571
Khorasan-e-Razavi.....	36	2684	12	729	7519	15479
North Khorasan.....	0	307	0	53	2918	872
Khuzestan.....	13	2075	18	128	3346	3906
Zanjan	2	469	7	161	3580	3601
Semnan.....	0	443	0	15	818	1128
Sistan & Baluchestan	12	333	1	19	1306	4097
Fars	22	3689	11	59	2296	11210
Qazvin	2	650	1	77	3007	2653
Qom.....	0	761	5	23	677	2313
Kordestan	1	588	0	398	7700	1600
Kerman	20	1845	6	102	5670	5545
Kermanshah	5	886	4	228	5114	1714
Kohgiluyeh & Boyerahmad	5	210	0	3	317	136
Golestan	1	962	0	942	6423	1797
Gilan.....	0	725	11	121	627	4286
Lorestan	4	531	4	109	4622	1816
Mazandaran	2	1856	3	28	1087	3418
Markazi	2	839	13	182	4045	2917
Hormozgan	9	904	1	0	364	2934
Hamedan	1	1228	3	567	7950	3315
Yazd	1	1612	10	14	934	6261

Source: Police Department.

12.6. TRIPS AND PASSENGERS ⁽¹⁾ TRANSPORTED WITHIN OSTANS BY DIFFERENT TYPES OF PUBLIC ROAD PASSENGER VEHICLES

Year and Ostan	Number of trips (1000 cases)				Passengers transported (1000 persons)			
	Total	Bus	Minibus	Passenger car	Total	Bus	Minibus	Passenger car
1380.....	7886	1714	5087	1084	136563	44969	87034	4560
1385.....	10538	1760	4012	4766	130769	43901	67923	18945
1390.....	12742	1946	4257	6539	139935	49026	65139	25770
1395.....	9500	1299	2619	5582	90525	29100	39684	21742
1396.....	9252	1203	2497	5552	82043	25137	35354	21552
1397.....	9124	1155	2439	5530	77313	23551	32398	21364
1398.....	8964	1144	2392	5428	75173	24663	29703	20807
1399.....	7717	979	2018	4720	55512	19373	20085	16052
East Azarbayejan	296	53	77	166	1799	633	581	585
West Azarbayejan	358	83	50	225	1953	730	562	662
Ardebil	171	3	12	157	647	35	109	503
Esfahan	513	60	216	236	3783	981	1958	845
Alborz	//	//	//	//	2	1	//	//
Ilam	87	1	2	84	315	28	19	269
Bushehr	95	47	33	15	2397	1964	384	50
Tehran	102	1	45	56	657	17	458	181
Chaharmahal & Bakhtiyari ...	320	//	108	212	1741	8	981	752
South Khorasan	97	23	21	54	770	467	153	150
Khorasan-e-Razavi.....	887	295	316	277	11579	7078	3557	943
North Khorasan.....	173	9	50	114	1010	151	517	341
Khuzestan.....	515	15	73	427	2144	390	492	1262
Zanjan	90	1	27	62	415	28	157	231
Semnan	80	7	12	61	408	113	100	195
Sistan & Baluchestan	406	115	224	67	2823	1538	1061	224
Fars	474	125	116	233	4207	1884	1504	819
Qazvin	121	1	72	48	1320	19	1125	175
Qom.....	23	2	20	1	402	97	298	7
Kordestan	251	6	64	181	1326	106	580	641
Kerman	453	84	71	298	4149	2214	893	1042
Kermanshah	195	//	40	155	1174	12	620	543
Kohgiluyeh & Boyerahmad .	100	//	1	99	318	2	5	311
Golestan	460	1	55	404	2402	14	790	1597
Gilan.....	478	2	65	411	2566	72	1036	1458
Lorestan	133	1	28	104	548	7	172	369
Mazandaran	420	1	47	373	1682	21	487	1174
Markazi	52	2	25	25	431	22	313	95
Hormozgan	105	2	53	50	447	54	233	159
Hamedan	227	19	86	122	1813	424	922	466
Yazd	34	19	11	4	284	261	18	4

1. Relating to the number of passengers registered in passenger transportation list by passenger transportation companies.

Source: Ministry of Roads and Urban Development.

12.7. TRIPS AND PASSENGERS ⁽¹⁾ TRANSPORTED BETWEEN OSTANS BY DIFFERENT TYPES OF PUBLIC ROAD PASSENGER VEHICLES AND OSTAN OF ORIGIN

Year and Ostan	Number of trips (1000 cases)				Passengers transported (1000 persons)			
	Total	Bus	Minibus	Passenger car	Total	Bus	Minibus	Passenger car
1380.....	4796	3322	935	539	84481	66259	15881	2340
1385.....	5946	3457	694	1795	93186	74075	12004	7107
1390.....	6318	3470	690	2158	95853	76725	10640	8488
1395.....	5659	3248	383	2028	76463	62923	5816	7724
1396.....	5823	3269	480	2074	71932	57514	6642	7776
1397.....	5970	3336	474	2160	71011	56695	6278	8038
1398.....	5703	3097	432	2174	68404	54836	5528	8040
1399.....	4741	2335	341	2065	36805	26509	3649	6649
East Azarbayejan	151	95	12	44	1167	925	82	161
West Azarbayejan	153	86	13	54	1141	839	137	165
Ardebil	95	52	3	40	651	506	25	120
Esfahan	315	185	30	100	2593	2034	225	334
Alborz	108	69	4	35	949	810	26	113
Ilam	41	10	2	30	235	126	16	94
Bushehr	80	64	8	8	1479	1346	110	24
Tehran	1035	592	5	438	8436	6979	63	1395
Chaharmahal & Bakhtiyari	142	32	26	84	902	394	228	280
South Khorasan	50	43	2	5	392	359	21	13
Khorasan-e-Razavi.....	155	120	8	27	1382	1203	89	91
North Khorasan.....	63	25	3	35	451	316	37	98
Khuzestan.....	132	77	5	51	1120	922	39	159
Zanjan	77	38	9	30	460	320	45	95
Semnan	77	18	3	56	449	256	19	174
Sistan & Baluchestan	115	108	4	3	907	877	19	11
Fars	191	116	40	35	2149	1584	464	101
Qazvin	85	12	16	56	670	279	198	193
Qom.....	79	21	7	50	807	517	99	190
Kordestan	141	35	13	94	805	357	125	323
Kerman	99	64	12	22	1063	859	132	71
Kermanshah	131	39	26	67	1225	580	421	225
Kohgiluyeh & Boyerahmad	66	10	5	51	304	129	19	155
Golestan	117	52	20	44	916	386	365	165
Gilan.....	212	69	10	133	933	382	146	405
Lorestan	101	53	5	42	801	634	30	138
Mazandaran	386	53	13	320	1674	531	174	968
Markazi	85	44	6	36	727	518	74	135
Hormozgan	81	50	10	21	632	497	71	64
Hamedan	124	54	19	50	900	564	150	186
Yazd	54	49	1	3	485	478	3	4

1. Relating to the number of passengers registered in passenger transportation list by passenger transportation companies.

12.8. WEIGHT OF FREIGHT⁽¹⁾ CARRIED BY PUBLIC ROAD FREIGHT VEHICLES (1000 tons)

Year and Ostan	Outgoing	Incoming	Carried within Ostan
1380.....	108354	108354	40546
1385.....	184724	184724	88876
1390.....	251480	251480	104343
1395.....	282645	282645	104870
1396.....	312885	312885	115462
1397.....	315499	315499	126573
1398.....	330503	330503	136434
1399.....	352176	352176	148082
East Azarbayejan.....	14231	15110	7579
West Azarbayejan	7787	8417	5013
Ardebil	2473	3000	1547
Esfahan.....	36925	31044	17078
Alborz	7860	9751	2766
Ilam	1442	2265	749
Bushehr	4858	6577	2837
Tehran	28356	42080	5532
Chaharmahal & Bakhtiari	4524	4332	759
South Khorasan	4194	5616	1991
Khorasan-e-Razavi.....	19118	22631	12669
North Khorasan	2310	3438	1095
Khuzestan.....	29987	21447	12163
Zanjan	6206	5257	2919
Semnan.....	8889	4534	1818
Sistan & Baluchestan	2625	9820	5646
Fars.....	21882	17827	10557
Qazvin	9273	9838	1112
Qom.....	5425	6038	572
Kordestan	5624	5926	2632
Kerman.....	26353	12343	9899
Kermanshah	6362	10591	2709
Kohgiluyeh & Boyerahmad	1081	1579	328
Golestan	4666	5467	2494
Gilan.....	6402	9796	4197
Lorestan.....	4158	3561	1457
Mazandaran.....	8543	12968	14653
Markazi	18856	9665	2395
Hormozgan.....	18374	29608	4707
Hamedan	9341	6743	2578
Yazd	24053	14907	5631

*1. Relating to volume of freight for transportation of which a bill of loading was issued.
Source: Ministry of Roads and Urban Development.*

12.9. VESSELS WITH THE CAPACITY OF 1000 AND OVER TONS ENTERED BY COMMERCIAL PORTS (ship)

Year	Grand total	Southern ports			
		Total	Abadan	Emam Khomeini ⁽¹⁾	Bushehr
1380.....	5532	4028	38	1106	168
1385.....	7775	5766	6	1432	479
1390.....	9112	6419	0	1639	623
1395.....	9193	7264	2	1618	594
1396.....	9400	7487	1	1658	564
1397.....	8349	6638	1	1483	487
1398.....	9069	7182	9	1547	500
1399.....	8117	6443	7	1287	557

Year	Southern ports						
	Shahid Beheshti (Chabahar) ⁽²⁾	Khoramshahr	Shahid Bahonar	Shahid Rajaei	Genaveh	Qeshm	Lengeh
1380.....	54	51	360	1864	000	000	387
1385.....	78	248	744	2526	000	000	253
1390.....	96	574	391	2959	000	000	137
1395.....	136	443	684	3243	55	71	418
1396.....	113	683	588	3358	51	149	322
1397.....	142	497	569	3091	19	116	233
1398.....	170	606	656	3397	2	90	205
1399.....	146	659	459	3082	6	87	153

Year	Northern ports					
	Total	Astara	Amirabad	Anzali	Fereydoon Kenar	Noshahr
1380.....	1504	000	51	926	000	527
1385.....	2009	000	203	1388	000	418
1390.....	2693	000	718	1682	000	293
1395.....	1929	56	626	974	37	236
1396.....	1913	65	835	749	33	231
1397.....	1711	74	938	440	36	223
1398.....	1887	77	1017	411	61	321
1399.....	1674	130	690	515	61	278

1. Including ships that entered Mahshahr port.

2. Including the data for Shahid Kalantari Port as of the year 1389. Accordingly, the statistics for the years 1380 and 1385 include the statistics for the vessels with 1000 or more tons that entered Shahid Beheshti and Shahid Kalantari ports.

Source: Ports and Maritime Organization.

12.10. WEIGHT OF CARGO UNLOADED FROM VESSELS AT COMMERCIAL PORTS⁽¹⁾ (ton)

Year	Southern ports									
	Total		Abadan		Arvand kenar		Emam Khomeini		Bushehr	
	Oil	Non-oil	Oil	Non-oil	Oil	Non-oil	Oil	Non-oil	Oil	Non-oil
1380.....	17674587	24827074	149210	28511	000	000	834378	12042146	1198114	351593
1385.....	24010884	37325833	0	18834	000	000	1668412	15620749	1186861	1148075
1390.....	20675545	42115799	1	54508	000	000	622250	12541732	1441162	1956092
1395.....	20033575	37125937	431	28585	0	1560	875912	16110269	205657	1295218
1396.....	20911653	38700495	63	41439	0	11412	1601195	15990809	100040	1346925
1397.....	19614268	31487359	248	19847	0	3168	1033599	15015584	438649	583365
1398.....	19141735	39701669	0	25657	0	0	893664	18698062	1062833	469750
1399.....	17041250	35656731	0	10271	0	668	1092115	17801011	598188	596948

Year	Southern ports							
	Tiyab		Jask		Chabahar		Charak	
	Oil	Non-oil	Oil	Non-oil	Oil	Non-oil	Oil	Non-oil
1380.....	000	000	75	438	482076	510531	000	000
1385.....	000	000	0	1297	978336	701664	000	000
1390.....	000	000	0	1481	1143457	364548	000	000
1395.....	0	24127	0	7634	1043174	383812	0	3778
1396.....	0	18721	0	5809	695536	724612	0	4651
1397.....	0	10850	0	17958	1274885	959778	0	303
1398.....	0	15000	0	3127	1881097	1209198	0	9965
1399.....	0	6850	0	1050	1379024	1415366	0	9428

Year	Southern ports									
	Choebade		Khoramshahr		Dayyer		Shahid Bahonar		Shahid Rajaei	
	Oil	Non-oil	Oil	Non-oil	Oil	Non-oil	Oil	Non-oil	Oil	Non-oil
1380.....	000	000	270	258786	000	000	374510	280748	14580682	10886583
1385.....	000	000	24	486413	000	000	117325	437381	19976633	16538684
1390.....	000	000	8913	585904	000	000	93319	241024	16943511	21533058
1395.....	0	1012	8	547982	0	432	678	227389	17805842	14513348
1396.....	0	578	4	571396	0	74022	2280	238765	18394051	15727822
1397.....	0	2214	0	165603	0	75797	41	151339	16753456	10879639
1398.....	0	8865	25	160542	0	153719	18	176212	15168916	14890722
1399.....	0	2936	4	160489	0	64565	9	156896	13848863	12389265

12.10. WEIGHT OF CARGO UNLOADED FROM VESSELS AT COMMERCIAL PORTS⁽¹⁾**(continued)****(ton)**

Year	Southern ports					
	Qeshm ⁽²⁾		Genaveh		Lengeh	
	Oil	Non-oil	Oil	Non-oil	Oil	Non-oil
1380	55193	224222	000	000	79	243516
1385	83203	1863654	000	31285	90	477797
1390	291173	4175455	131586	82323	173	579674
1395	101780	3601880	0	93034	93	285877
1396	118407	3519001	0	72174	77	352359
1397	113390	3160726	0	61029	0	380159
1398	135175	3443833	0	85361	7	351656
1399	123023	2736521	0	63070	24	241397

Year	Northern ports											
	Total		Astara		Amirabad		Anzali		Fereydoon Kenar		Noshahr	
	Oil	Non-oil	Oil	Non-oil	Oil	Non-oil	Oil	Non-oil	Oil	Non-oil	Oil	Non-oil
1380	121795	3976045	000	000	0	110169	28	2592202	000	000	121767	1273674
1385	958247	5295666	000	000	8103	619758	394893	3911550	000	000	555251	764358
1390	525479	6929599	000	000	76457	1380279	445243	4833475	000	000	3779	715845
1395	146357	5153264	0	130289	20131	1638863	69431	2670922	56795	35463	0	677727
1396	193465	5433158	0	112151	45936	2718259	81266	1969114	66227	39528	36	594106
1397	79278	5021137	0	61363	21430	3303832	31739	1032534	26109	70614	0	552794
1398	60157	5155619	0	28641	49992	3273725	0	849181	10165	160310	0	843762
1399	125484	4022257	0	79873	89945	1897813	0	1146047	35539	124659	0	773865

1. Including commercial ports under the ownership of the Ports and Maritime Organization.

2. Qeshm Port is under the ownership of the Qeshm Trade-Industrial Free Zone

Source: Ports and Maritime Organization.

12.11. WEIGHT OF CARGO LOADED ONTO VESSELS AT COMMERCIAL PORTS⁽¹⁾ (ton)

Year	Southern ports									
	Total		Abadan		Arvand kenar		Emam Khomeini		Bushehr	
	Oil	Non-oil	Oil	Non-oil	Oil	Non-oil	Oil	Non-oil	Oil	Non-oil
1380.....	19216564	9744224	0	69858	000	000	12364410	3713945	101916	220483
1385.....	16893858	21490708	13353	58744	000	000	10763067	3427962	326648	289036
1390.....	24302297	39097787	0	37414	000	000	14892734	7301474	589676	1142972
1395.....	26049786	56824582	0	47364	0	2315	16634993	9407208	409490	1264454
1396.....	26852968	64105499	0	46392	0	78	17079077	10687249	441420	1009238
1397.....	25350924	55401941	60	72784	0	1893	15039084	9944542	460588	1252157
1398.....	27654535	57578837	0	98813	0	2181	14524597	10839854	345096	1302137
1399.....	28017632	44413048	0	3054	0	966	11591012	8638228	355528	2047035

Year	Southern ports							
	Tiyab		Jask		Chabahar		Charak	
	Oil	Non-oil	Oil	Non-oil	Oil	Non-oil	Oil	Non-oil
1380.....	000	000	0	10274	1044	79875	000	000
1385.....	000	000	0	32208	524	467	000	000
1390.....	000	000	0	23040	0	11348	000	000
1395.....	0	279	0	27197	0	76519	623	831143
1396.....	0	202	0	39552	0	20437	0	526561
1397.....	0	103	0	50764	0	52659	0	324505
1398.....	0	117	0	97854	0	102650	0	444874
1399.....	0	201	0	122453	25	137840	0	589818

Year	Southern ports									
	Choebade		Khoramshahr		Dayyer		Shahid Bahonar		Shahid Rajae	
	Oil	Non-oil	Oil	Non-oil	Oil	Non-oil	Oil	Non-oil	Oil	Non-oil
1380.....	000	000	0	272153	000	000	122892	736550	6616575	4263070
1385.....	000	000	2	584474	000	000	288556	976322	5497708	13827502
1390.....	000	000	47763	955253	000	000	287998	909141	7923226	24357184
1395.....	0	23002	0	475042	0	0	475616	956394	8527776	39684374
1396.....	0	24297	292	1757562	0	65811	510012	1096024	8821387	44509235
1397.....	0	35411	570	2040437	0	187443	414672	949019	9435096	36264637
1398.....	0	28394	402	2628207	79882	235003	530558	1204641	12171820	36137235
1399.....	0	1965	0	3029622	0	253921	481988	1275016	15585115	24424972

12.11. WEIGHT OF CARGO LOADED ONTO VESSELS AT COMMERCIAL PORTS⁽¹⁾ (continued)
(ton)

Year	Southern ports					
	Qeshm ⁽²⁾		Genaveh		Lengeh	
	Oil	Non-oil	Oil	Non-oil	Oil	Non-oil
1380.....	9647	32147	000	000	80	345869
1385.....	4000	1933593	000	1873	0	358527
1390.....	328128	4010171	231272	3725	1500	346065
1395.....	0	3479933	0	19999	1288	529359
1396.....	0	3347258	0	28421	780	947182
1397.....	0	3290396	0	41578	854	893613
1398.....	1587	3595660	0	27608	593	833609
1399.....	3940	2911584	0	21027	24	955346

Year	Northern ports											
	Total		Astara		Amirabad		Anzali		Fereydoon Kenar		Noshahr	
	Oil	Non-oil	Oil	Non-oil	Oil	Non-oil	Oil	Non-oil	Oil	Non-oil	Oil	Non-oil
1380.....	6	133028	000	000	0	0	6	86016	000	000	0	47012
1385.....	0	266452	000	000	0	6927	0	177914	000	000	0	81611
1390.....	8690	1614245	000	000	8690	1404369	0	185892	000	000	0	23984
1395.....	67	731580	0	33960	0	558877	67	123214	0	4870	0	10659
1396.....	893	649781	0	80345	798	427206	95	127210	0	680	0	14340
1397.....	828	771528	0	125047	482	467147	346	167482	0	0	0	11852
1398.....	3059	1093873	2	122003	2199	774060	858	184286	0	1980	0	11544
1399.....	29856	923909	15223	138550	3979	530045	10654	226638	0	7949	0	20727

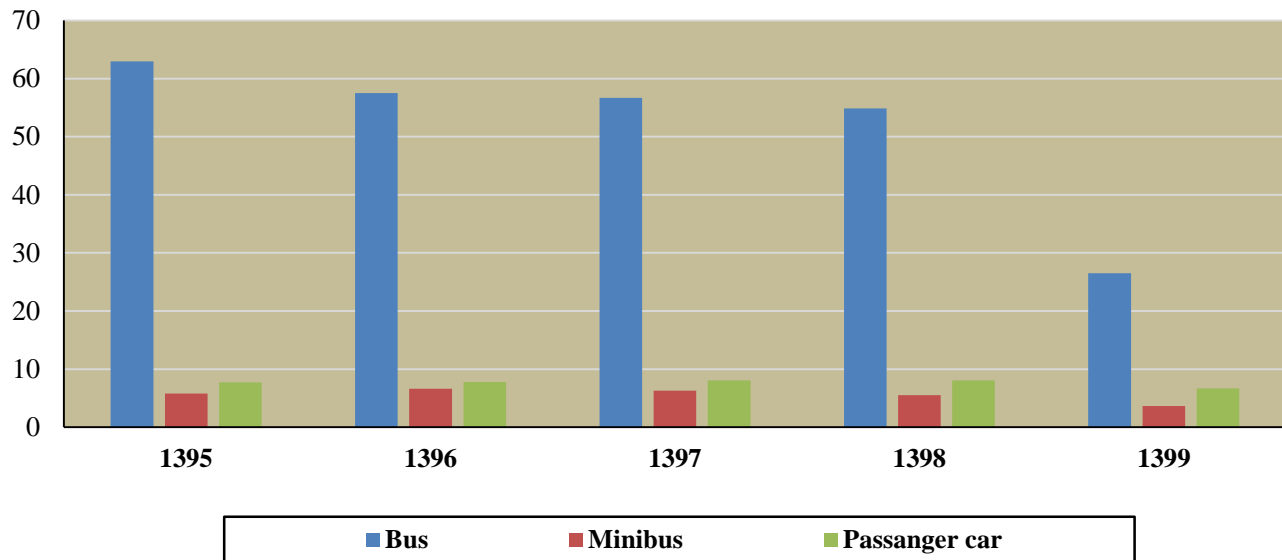
1. Including commercial ports under the ownership of the Ports and Maritime Organization.

2. Qeshm Port is under the ownership of the Qeshm Trade-Industrial Free Zone

Source: Ports and Maritime Organization.

12.1 . NUMBER OF PASSENGERS TRANSPORTED BETWEEN OSTANS BY DIFFERENT TYPES OF PUBLIC ROAD PASSENGER VEHICLES

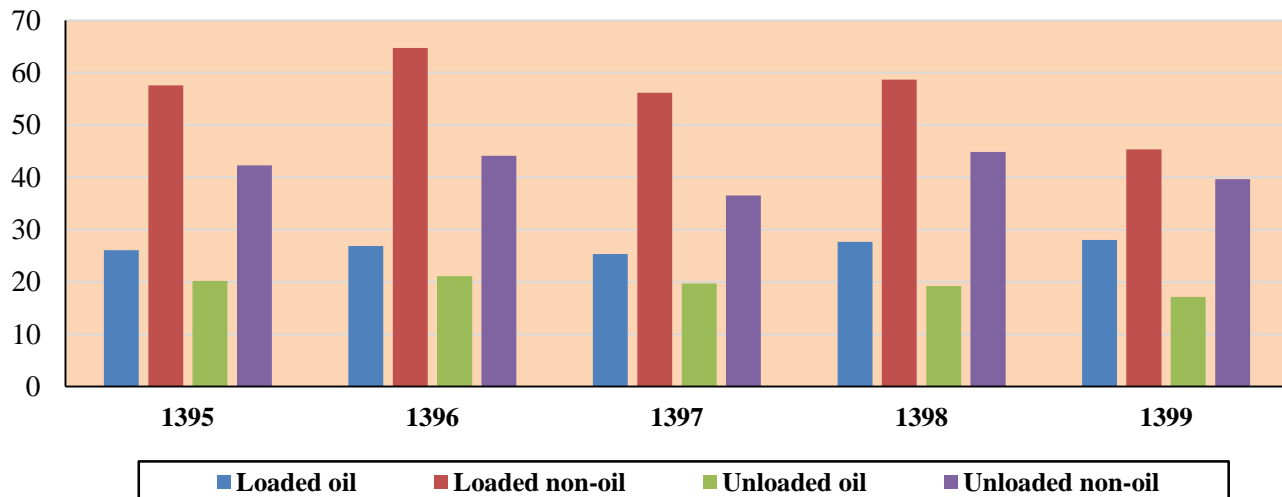
Million persons



For data see Table 12.7.

12.2. WEIGHT OF CARGO UNLOADED AND LOADED AT COMMERCIAL PORTS

Million tons



For data see Tables 12.10 and 12.11.

12.12. PASSENGERS ARRIVING AT AND DEPARTING FROM PORTS (1000 persons)

Year	Port									
	Total		Aftab		Bushehr		Charak		Khark	
	Arrival	Departure	Arrival	Departure	Arrival	Departure	Arrival	Departure	Arrival	Departure
1385.....	898717	817006	0	0	17315	21186	0	0	0	0
1390.....	5193795	5124258	0	0	71109	73864	0	0	0	0
1395.....	9669726	9463228	26748	33781	53524	56832	131040	117303	98665	94666
1396.....	10717320	10671917	39705	44219	52521	52615	151307	133190	103024	105748
1397.....	10151500	10118046	60774	56003	58532	59513	181995	156177	107531	109795
1398.....	9543562	9500832	52431	54898	55981	55201	202409	191697	103627	102533
1399.....	4858611	4900705	37693	42818	36285	36700	129310	118403	63848	62458

Year	Port									
	Khoramshahr		Shahid Bahonar		Shahid Haqani		Qeshm		Kish	
	Arrival	Departure	Arrival	Departure	Arrival	Departure	Arrival	Departure	Arrival	Departure
1385.....	5907	3483	143361	92707	0	0	706224	675178	0	0
1390.....	18767	13714	97244	42992	1473629	1519141	3434775	3375029	0	0
1395.....	97887	105082	16371	14842	1355042	1377570	7051127	6899533	521904	490611
1396.....	119122	118765	15031	12887	1386675	1397877	7933775	7909044	622930	621688
1397.....	198012	199253	19980	19928	1437993	1468642	7006890	6955499	641847	665771
1398.....	58889	59565	30297	26921	1386112	1398578	6663898	6613258	515852	523307
1399.....	0	0	0	0	725397	728539	3365295	3391800	296810	313854

Year	Ports							
	Genave		Lavan		Lengeh		Hormoz	
	Arrival	Departure	Arrival	Departure	Arrival	Departure	Arrival	Departure
1385.....	0	0	0	0	25910	24452	0	0
1390.....	56657	59432	0	0	41614	40086	0	0
1395.....	44850	43033	0	0	19947	19219	252621	210756
1396.....	48369	45697	0	0	26242	26606	218619	203581
1397.....	52561	50962	0	0	27895	25118	357490	351385
1398.....	45826	48964	0	90	30216	29399	398024	396421
1399.....	27411	28899	0	0	3746	2571	172816	174663

Source: Ports and Maritime Organization.

12.13. PASSENGERS ARRIVING AT AND DEPARTING FROM AIRPORTS BY DOMESTIC AND INTERNATIONAL FLIGHTS (1000 persons)

Year	Departure			Arrival		
	Total	Domestic	International	Total	Domestic	International
1380.....	10101	8564	1537	10039	8564	1475
1385.....	15286	12423	2862	15245	12423	2822
1390.....	20885	16476	4404	20860	16476	4379
1395.....	27542	22017	5525	27379	22017	5362
1396.....	29748	23702	6046	29699	23702	5997
1397.....	24811	19913	4898	24749	19913	4836
1398.....	22785	18539	4246	22756	18539	4217
1399.....	12722	12131	591	12704	12131	573

Source: Civil Aviation Organization.

12.14. PASSENGERS TRANSPORTED BY DOMESTIC AND FOREIGN AIRLINES ON INTERNATIONAL FLIGHTS (1000 persons)

Description	Year							
	1380		1385		1390		1395	
	Departure	Arrival	Departure	Arrival	Departure	Arrival	Departure	Arrival
Total.....	1537	1475	2822	2862	4404	4379	5525	5362
Domestic airlines.....	1160	1119	1921	1942	2566	2536	3029	2947
Foreign airlines	376	356	901	921	1837	1842	2496	2415

Description	Year							
	1396		1397		1398		1399	
	Departure	Arrival	Departure	Arrival	Departure	Arrival	Departure	Arrival
Total	6046	5997	4898	4836	4246	4217	591	573
Domestic airlines	3339	3314	2790	2751	2576	2602	284	295
Foreign airlines	2707	2683	2108	2085	1670	1615	307	278

Source: Civil Aviation Organization.

12.15. PASSENGERS TRANSPORTED BY DOMESTIC AIRLINES BY AIRPORT ON DOMESTIC FLIGHTS⁽¹⁾
(1000 persons)

Ostan and airport	Year							
	1380		1385		1390		1395	
	Departure	Arrival	Departure	Arrival	Departure	Arrival	Departure	Arrival
Total	8564	8564	12423	12423	16476	16476	22017	22017
East Azarbajejan								
Tabriz	273	275	390	395	535	536	774	776
Sahand.....	3	3	3	3	1	1	//	//
West Azarbajejan								
Orumiyeh	110	108	134	131	121	123	173	175
Khoy.....	×	×	×	×	6	5	4	4
Maku	×	×	×	×	×	×	×	×
Maragheh	×	×	×	×	×	×	×	×
Ardebil								
Ardebil	42	43	89	88	128	124	114	113
Parsabad	2	2	3	2	5	4	×	×
Esfahan								
Esfahan.....	516	524	664	666	729	752	994	1007
Kashan.....	×	×	×	×	×	×	13	12
Alborz								
Payam.....	×	×	×	×	×	×	×	×
Ilam								
Ilam	7	8	18	18	69	67	94	92
Bushehr								
Bahrgan	2	2	3	3	10	8	11	8
Bushehr	125	123	150	148	177	174	199	199
Khark.....	47	40	78	77	83	83	81	84
Asaluyeh (Persian Gulf).....	21	19	282	276	317	317	404	400
Jam	9	8	15	15	13	11	//	//
Tehran								
Emam Khomeini	×	×	×	×	0	1	0	0
Mehrbad	3441	3476	5047	5062	6220	6288	7968	7953
Chaharmahal & Bakhtiari								
Shahr-e-Kord.....	11	12	7	9	7	8	16	17
South Khorasan								
Birjand.....	6	7	43	43	49	51	54	53
Tabas.....	1	2	//	//	2	2	4	5
Khorasan-e-Razavi								
Sabzevar.....	×	×	×	×	19	20	13	13
Mashhad.....	1033	1026	1457	1486	2472	2438	3915	3927
North Khorasan								
Bojnourd.....	4	4	7	7	19	18	18	19
Khuzestan								
Abadan	108	106	124	126	162	163	299	289
Aghajari.....	×	×	×	×	7	5	6	5
Ahvaz	455	454	691	692	901	900	1262	1256
Dezful.....	//	//	17	17	58	57	81	82
Mahshahr.....	52	48	137	135	106	101	80	76
Zanjan								
Zanjan	×	×	×	×	9	9	6	6

12.15. PASSENGERS TRANSPORTED BY DOMESTIC AIRLINES BY AIRPORT ON DOMESTIC FLIGHTS⁽¹⁾ (continued)
(1000 persons)

Ostan and airport	Year							
	1380		1385		1390		1395	
	Departure	Arrival	Departure	Arrival	Departure	Arrival	Departure	Arrival
<i>Semnan</i>								
Semnan	×	×	×	×	×	×	×	×
Shahrud	0	0	0	0	0	0	2	2
<i>Sistan & Baluchestan</i>								
Iranshahr	4	4	5	6	8	8	3	0
Chabahar	76	72	91	85	78	82	98	95
Zabol	4	2	16	12	7	7	14	17
Zahedan	139	140	172	162	249	229	240	234
<i>Fars</i>								
Jahrom	//	//	//	//	//	//	//	//
Shiraz	615	620	835	842	977	982	1358	1412
Lar	11	12	9	10	13	12	14	13
Lamerd	7	6	14	14	0	0	6	8
<i>Kordestan</i>								
Sanandaj	14	15	27	29	41	43	31	34
<i>Kerman</i>								
Bam	6	5	23	24	5	7	5	7
Jiroft	//	//	0	0	0	0	5	7
Rafsanjan	8	9	6	6	0	0	7	8
Sirjan	4	4	11	10	5	5	18	19
Kerman	193	191	218	215	337	332	355	349
<i>Kermanshah</i>								
Kermanshah	169	176	230	228	260	257	269	267
<i>Kohgiluyeh & Boyerahmad</i>								
Gachsaran	×	×	×	×	×	×	8	6
Yasuj	×	×	×	×	16	15	13	13
<i>Golestan</i>								
Gorgan	8	8	33	31	108	109	101	102
Kalaleh	×	×	×	×	×	×	×	×
<i>Gilan</i>								
Rasht	59	60	64	65	147	148	183	182
<i>Lorestan</i>								
Khorramabad	16	19	20	24	14	14	21	20
<i>Mazandaran</i>								
Ramsar	5	5	9	9	15	15	26	25
Sari	27	27	27	30	62	65	138	143
Noshahr	//	0	8	7	15	15	16	16
<i>Markazi</i>								
Arak	×	×	×	×	4	4	7	8
<i>Hormozgan</i>								
Abumusa	1	1	11	10	15	15	9	9
Bandar Abbas	271	256	343	332	503	497	530	515
Jask	×	×	×	×	×	×	×	×
Bandar-e-Lengeh	23	20	17	15	15	14	12	11
Siri	21	19	32	22	36	27	31	25
Qeshm	20	16	35	38	84	76	218	216
Kish	438	444	608	607	999	1005	1339	1327
Lavan	34	26	28	27	38	30	30	27
<i>Hamedan</i>								
Hamedan	3	4	2	3	11	11	17	16
<i>Yazd</i>								
Yazd	119	110	135	133	188	187	312	311

12.15. PASSENGERS TRANSPORTED BY DOMESTIC AIRLINES BY AIRPORT ON DOMESTIC FLIGHTS⁽¹⁾ (continued)
(1000 persons)

Ostan and airport	Year							
	1396		1397		1398		1399	
	Departure	Arrival	Departure	Arrival	Departure	Arrival	Departure	Arrival
Total	23702	23702	19913	19913	18539	18539	12129	12129
East Azarbayejan								
Tabriz.....	792	781	653	641	602	593	446	434
Sahand.....	1	1	//	//	1	1	3	3
West Azarbayejan								
Orumiyeh.....	199	201	162	164	150	153	121	119
Khoy.....	1	1	5	5	5	6	3	3
Maku.....	×	×	7	8	8	9	5	5
Maragheh.....	×	×	×	×	×	×	3	3
Ardebil								
Ardebil.....	119	118	82	79	75	75	76	73
Parsabad.....	1	1	3	3	2	2	4	4
Esfahan								
Esfahan.....	1079	1089	788	825	704	743	512	523
Kashan.....	15	15	3	3	10	10	//	//
Alborz								
Payam.....	×	×	3	3	1	//	5	5
Ilam								
Ilam.....	99	95	98	94	101	98	67	62
Bushehr								
Bahrgan.....	10	9	9	8	6	6	6	5
Bushehr.....	258	250	206	186	211	206	142	140
Khark.....	79	82	77	79	70	73	63	63
Asaluyeh.....	416	418	375	377	344	339	278	278
Jam (Tohid).....	//	//	0	0	0	0	0	0
Tehran								
Emam Khomeini.....	1	1	2	2	1	2	//	//
Mehrabad.....	8406	8442	7073	7084	6506	6564	4345	4397
Chaharmahal & Bakhtiari								
Shahr-e-Kord.....	23	25	13	15	5	6	3	4
South Khorasan								
Birjand.....	62	61	42	42	47	48	39	39
Tabas.....	5	6	3	4	2	3	4	4
Khorasan-e-Razavi								
Sabzevar.....	15	14	11	10	13	13	6	5
Mashhad.....	4171	4190	3372	3396	3182	3152	1397	1398
North Khorasan								
Bojnourd.....	16	17	6	7	13	14	11	11
Khuzestan								
Abadan.....	303	293	343	339	399	399	131	129
Aghajari.....	7	6	7	5	7	5	0	0
Ahvaz.....	1344	1326	1118	1104	1044	1034	662	639
Dezful.....	96	98	67	66	54	55	55	55
Mahshahr.....	88	82	78	73	72	68	52	49
Zanjan								
Zanjan.....	11	11	4	4	6	6	0	0

12.15. PASSENGERS TRANSPORTED BY DOMESTIC AIRLINES BY AIRPORT ON DOMESTIC FLIGHTS⁽¹⁾ (continued)
(1000 persons)

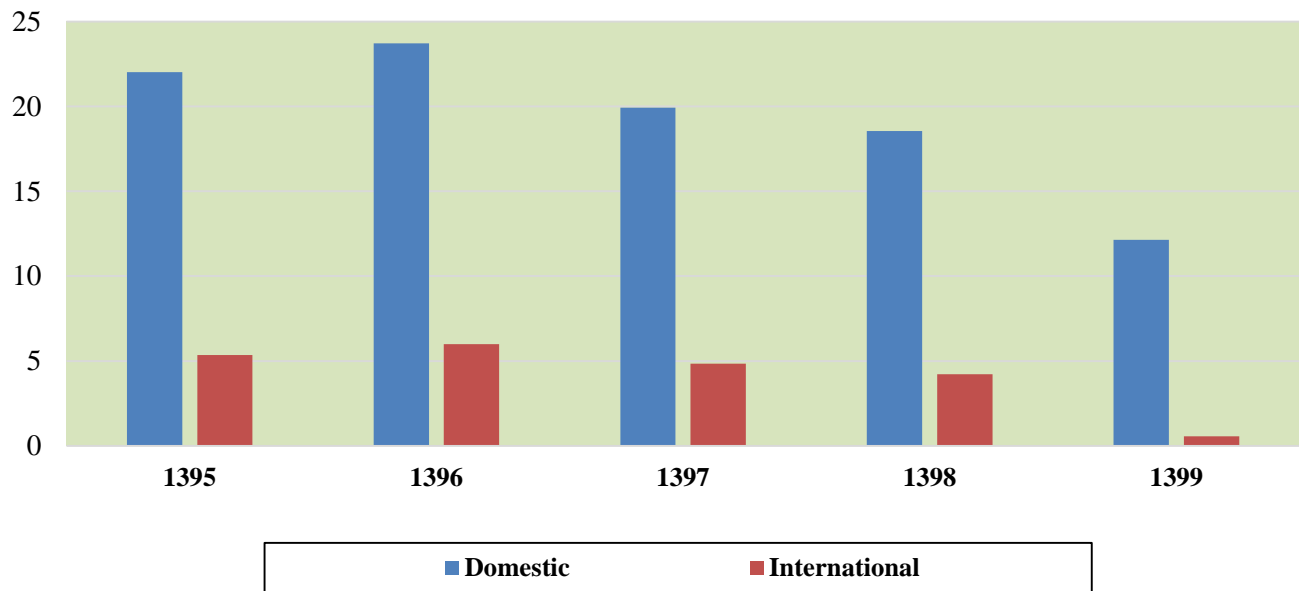
Ostan and airport	Year							
	1396		1397		1398		1399	
	Departure	Arrival	Departure	Arrival	Departure	Arrival	Departure	Arrival
<i>Semnan</i>								
Semnan	×	×	//	//	1	1	0	0
Shahrud	2	2	4	4	//	//	//	//
<i>Sistan & Baluchestan</i>								
Iranshahr	3	//	3	//	2	1	3	3
Chabahar	123	118	113	106	120	113	116	110
Zabol	16	16	11	13	6	8	9	8
Zahedan	256	252	225	218	228	222	194	187
<i>Fars</i>								
Jahrom	2	2	3	3	4	4	3	3
Shiraz	1505	1538	1258	1283	1104	1125	754	761
Lar	17	16	10	10	11	12	9	9
Lamerd	5	7	5	6	8	9	4	6
<i>Kordestan</i>								
Sanandaj	34	36	25	28	15	20	7	7
<i>Kerman</i>								
Bam	5	7	4	5	4	5	3	3
Jiroft	5	8	2	6	1	4	2	4
Rafsanjan	7	8	4	5	4	4	1	1
Sirjan	27	28	23	24	24	25	22	23
Kerman	391	387	361	356	237	235	244	235
<i>Kermanshah</i>								
Kermanshah	326	325	263	265	261	263	164	160
<i>Kohgiluyeh & Boyerahmad</i>								
Gachsaran	9	9	6	6	6	6	9	9
Yasuj	10	10	1	1	4	4	5	5
<i>Golestan</i>								
Gorgan	129	129	83	83	82	83	75	76
Kalaleh	×	×	1	0	0	0	0	0
<i>Gilan</i>								
Rasht	217	213	190	186	173	175	109	112
<i>Lorestan</i>								
Khorrarnabad	34	32	22	20	23	22	20	19
<i>Mazandaran</i>								
Ramsar	44	41	18	17	19	18	18	18
Sari	169	168	143	144	142	147	89	91
Noshahr	29	28	25	24	22	21	6	6
<i>Markazi</i>								
Arak	12	12	9	9	0	0	3	4
<i>Hormozgan</i>								
Abumusa	19	19	11	11	9	9	10	10
Bandar Abbas	619	605	556	541	523	507	434	420
Jask	×	×	0	0	0	0	1	1
Bandar-e-Lengeh	13	12	5	5	4	4	4	4
Siri	28	23	27	21	24	23	24	24
Qeshm	242	235	211	205	179	174	128	125
Kish	1374	1372	1389	1391	1279	1245	1021	1043
Lavan	30	29	29	27	27	26	25	24
<i>Hamedan</i>								
Hamedan	17	17	12	13	8	8	0	0
<i>Yazd</i>								
Yazd	358	353	248	248	244	241	180	174

1. Statistics for some airports that have provided flight services by case in some years are included in the total only.

Source: Civil Aviation Organization.

12.3. NUMBER OF IN-COMING PASSENGERS ON DOMESTIC & INTERNATIONAL FLIGHTS

Million persons



For data see Table 12.13.

12.16. PASSENGERS TRANSPORTED ON INTERNATIONAL FLIGHTS OF DOMESTIC AIRLINES BY DOMESTIC AIRPORTS (1000 persons)

Description	Year							
	1380 ⁽¹⁾		1385 ⁽¹⁾		1390		1395	
	Departure	Arrival	Departure	Arrival	Departure	Arrival	Departure	Arrival
Total.....	979	985	1272	1256	4404	4377	5525	5362
Abadan.....	3	4	0	0	5	5	25	20
Ardebil.....	000	000	000	000	10	10	7	7
Orumiyeh.....	3	3	1	1	15	14	18	17
Esfahan.....	45	65	65	65	209	198	252	247
Emam Khomeini.....	×	×	210	206	2391	2338	3772	3667
Ahvaz.....	15	16	24	22	63	61	42	39
Bandar Abbas.....	25	26	32	32	57	55	41	37
Bushehr.....	16	15	18	17	15	15	7	7
Tabriz.....	13	13	24	24	139	142	126	116
Tehran.....	602	584	545	540	390	376	2	3
Chabahar.....	000	000	000	000	6	6	7	7
Rasht.....	4	4	0	0	22	22	6	3
Zahedan.....	2	3	1	1	23	23	10	10
Sari.....	14	18	16	16	74	75	34	34
Shiraz.....	98	91	113	119	155	202	202	200
Qeshm.....	//	//	//	//	23	24	26	21
Kerman.....	11	8	3	3	50	50	33	32
Kermanshah.....	2	3	1	1	24	24	5	5
Kish.....	//	//	//	//	95	90	25	26
Lar.....	31	28	30	28	38	37	57	56
Lamerd.....	10	10	10	10	8	7	4	3
Mashhad.....	75	82	123	113	506	519	785	768
Yazd.....	8	8	7	7	46	46	22	19
Other.....	1	4	49	51	40	38	17	18

12.16. PASSENGERS TRANSPORTED ON INTERNATIONAL FLIGHTS OF DOMESTIC AIRLINES BY DOMESTIC AIRPORT (continued) (1000 persons)

Description	Year							
	1396		1397		1398		1399	
	Departure	Arrival	Departure	Arrival	Departure	Arrival	Departure	Arrival
Total.....	6046	5997	4898	4836	2576	2602	284	295
Abadan	16	15	3	3	0	0	0	0
Ardebil	6	6	1	1	0	0	0	0
Orumiyeh	25	24	19	15	9	9	0	0
Esfahan.....	251	249	130	125	38	41	0	2
Emam Khomeini	4287	4233	3452	3388	1873	1874	228	229
Ahvaz	51	48	30	27	17	15	0	0
Bandar Abbas.....	40	42	22	21	20	19	3	3
Bushehr	11	12	1	1	0	0	0	0
Tabriz.....	151	145	114	112	56	61	7	8
Tehran	1	2	0	1	2	2	1	1
Chabahar	6	6	4	4	0	0	0	0
Rasht	9	8	2	3	0	0	0	0
Zahedan.....	9	10	3	3	1	1	0	0
Sari	28	28	9	9	5	5	0	0
Shiraz	221	222	217	217	68	70	17	19
Qeshm	24	23	22	22	19	17	4	5
Kerman.....	29	29	13	13	11	11	0	0
Kermanshah	2	2	2	2	3	2	0	0
Kish.....	23	24	22	22	17	18	0	1
Lar.....	59	56	53	54	17	14	10	9
Lamerd	3	2	0	0	0	0	0	0
Mashhad.....	757	774	758	773	393	417	14	18
Yazd	13	13	7	7	4	4	0	0
Other	24	24	14	13	23	21	0	0

1. Statistics for the years 1380 and 1385 include only Airline of the I.R.I. and Aseman Airline.

Source: Civil Aviation Organization.

12.17. HAJJ PILGRIMS(1) TRANSPORTED BY AIRLINES

Description	Origin	Destination
1380.....	88591	88666
1385.....	103133	103689
1390.....	98484	96265
1395 ⁽²⁾	×	×
1396.....	86144	86090
1397.....	85943	85953
1398.....	88543	88521
1399⁽³⁾	×	×
Ardebil	×	×
Orumiyeh	×	×
Esfahan.....	×	×
Ahvaz	×	×
Bandar Abbas	×	×
Bushehr	×	×
Birjand.....	×	×
Tabriz	×	×
Tehran	×	×
Rasht	×	×
Zahedan.....	×	×
Zanjan	×	×
Sari	×	×
Shiraz	×	×
Kerman.....	×	×
Kermanshah	×	×
Gorgan.....	×	×
Mashhad	×	×
Hamedan	×	×
Yazd	×	×

1. Relating to the greater pilgrimage.

2. In the year 1395, Iranian hajj pilgrims did not participate in Hajj rituals due to Mena accident and cut off of diplomatic ties between Iran and Saudi Arabia.

3. In the year 1399, due to the outbreak of Coronavirus disease, the Iranian Hajj pilgrims did not participate in the Hajj rituals.

Source: Civil Aviation Organization.

12.18. WEIGHT OF FREIGHT AND POSTAL ARTICLES TRANSPORTED THROUGH AIRPORTS OF THE COUNTRY BY DOMESTIC AND INTERNATIONAL FLIGHT (ton)

Year	Freight					
	Dispatched			Received		
	Total	Domestic	International	Total	Domestic	International
1380	51979	26968	25012	52953	26968	25985
1385	58529	32173	26356	128559	32173	96386
1390	81219	56413	24806	117634	56413	61221
1395	31433	12524	18909	39178	12524	26654
1396	44091	12322	31769	78312	12322	65990
1397	47111	12576	34535	71300	12576	58724
1398	35798	12952	22846	58788	12952	45836
1399	35172	15009	20163	59826	15009	44817

Year	Postal articles					
	Dispatched			Received		
	Total	Domestic	International	Total	Domestic	International
1380.....	3914	2751	1162	3970	2751	1218
1385.....	6774	4763	2011	9723	4763	4960
1390.....	8023	3843	4180	11685	3843	7842
1395.....	1901	1781	120	2471	1781	690
1396.....	3318	2412	906	3924	2412	1512
1397.....	2874	1262	1612	2376	1262	1114
1398.....	2267	1173	1094	2201	1173	1028
1399.....	1774	680	1094	1453	680	773

Source: Civil Aviation Organization.

12.19. GENERAL SPECIFICATIONS OF TRANSPORTATION COOPERATIVES AT THE END OF YEAR

Description	Number	Members	Workers	Capital (mln rials)
<i>Total cooperatives⁽¹⁾</i>				
1380.....	1382	169986	53846	395300
1385.....	2521	186166	66810	456454
1390.....	4116	133853	86106	5159387
1395.....	4507	241005	85400	1384093
1396.....	4532	242052	86843	1406846
1397.....	4579	239794	85885	1451626
1398.....	4629	241980	88549	1466062
1399.....	2173	000	54917	000
<i>Cooperatives under establishment</i>				
1380.....	0	0	0	0
1385.....	4	54	63	67
1390.....	61	944	973	1649
1395.....	3	21	18	52
1396.....	0	0	0	0
1397.....	0	0	0	0
1398.....	0	0	0	0
1399.....	0	0	0	0
<i>Cooperatives in operation</i>				
1380.....	776	68607	44047	4613418
1385.....	1455	78324	52375	4704154
1390.....	2579	178316	67804	4678827
1395.....	2222	180769	56733	913361
1396.....	2143	174249	57102	934146
1397.....	2139	175179	55385	953886
1398.....	2171	177225	57925	968154
1399.....	2173	177210	54917	968281

12.19. GENERAL SPECIFICATIONS OF TRANSPORTATION COOPERATIVES AT THE END OF YEAR (continued)

Description	Number	Member	Employees	Capital (mln rials)
East Azarbayejan.....	102	12850	2101	12090
West Azarbayejan	32	6754	1864	18203
Ardebil	37	5899	649	2287
Esfahan.....	105	19354	2254	41679
Alborz	10	1256	456	6898
Ilam	9	138	48	89
Bushehr	175	4159	2605	98035
Tehran	132	11798	9554	429444
Chaharmahal & Bakhtiyari	37	1829	1893	13848
South Khorasan	15	1778	85	1786
Khorasan-e-Razavi.....	114	21572	2555	14671
North Khorasan	46	2471	985	3023
Khuzestan.....	73	8279	1212	8022
Zanjan	19	2760	149	5110
Semnan.....	19	2700	1980	3028
Sistan & Baluchestan	55	1156	1022	43070
Fars.....	92	12538	4057	35897
Qazvin	41	4003	694	2648
Qom.....	9	3849	92	3419
Kordestan	46	3690	644	1808
Kerman.....	87	5068	1020	12771
Kermanshah	36	4336	1584	902
Kohgiluyeh & Boyerahmad	39	292	305	1775
Golestan	74	4103	1385	12474
Gilan.....	121	8247	5429	14980
Lorestan.....	63	1400	592	5466
Mazandaran.....	147	9211	4221	13288
Markazi	107	5984	961	1668
Hormozgan.....	229	4857	3474	141852
Hamedan	19	1091	144	445
Yazd	83	3788	903	17605

1. Excluding cooperatives out of operation as of the year 1399.

Source: Ministry of Cooperatives, Labor and Social Welfare.

12.20. NUMBER OF ESTABLISHMENTS RENDERING STORAGE SERVICES BY TYPE OF MAIN ACTIVITY AND OSTAN

Year & Ostan	Total	Storage	Cold storage
1384.....	820	378	442
1387.....	827	393	434
1390.....	1141	610	530
1393.....	1285	628	657
1398.....	1835	962	873
East Azarbayejan	89	17	72
West Azarbayejan	187	10	177
Ardebil	18	6	12
Esfahan	77	43	34
Alborz	28	0	28
Ilam	4	2	2
Bushehr	8	5	3
Tehran	714	702	12
Chaharmahal & Bakhtiyari	7	1	6
South Khorasan	7	0	7
Khorasan-e-Razavi.....	53	16	37
North Khorasan.....	8	3	5
Khuzestan.....	34	3	31
Zanjan	9	1	8
Semnan	16	4	12
Sistan & Baluchestan	37	6	31
Fars	24	8	16
Qazvin	13	1	12
Qom.....	19	13	6
Kordestan	14	3	11
Kerman	188	0	188
Kermanshah	10	5	5
Kohgiluyeh & Boyerahmad	2	0	2
Golestan	23	15	8
Gilan.....	26	4	22
Lorestan	14	5	9
Mazandaran	91	13	78
Markazi	8	0	8
Hormozgan	75	68	7
Hamedan	24	6	18
Yazd	8	2	6

Source: Statistical Centre of Iran.

12.21. EMPLOYEES OF ESTABLISHMENTS RENDERING STORAGE SERVICES AND COMPENSATION OF WAGE AND SALARY WORKERS BY OSTAN

Year & Ostan	Total workers	Wage and salary workers	Unpaid wage and salary workers	Compensation of workers ⁽¹⁾ (mln rials)
1384	8177	7083	1094	230341
1387	8582	7528	1054	437934
1390	10410	9252	1158	696499
1393	10911	9468	1443	1204642
1398.....	12809	10875	1934	3273346
East Azarbayejan	894	767	127	265606
West Azarbayejan	1059	824	235	247517
Ardebil	80	55	25	15168
Esfahan	515	407	108	130843
Alborz	314	281	33	68760
Ilam	52	50	2	12606
Bushehr	83	76	7	23653
Tehran	4485	3827	659	1391009
Chaharmahal & Bakhtiari	66	58	8	14481
South Khorasan	23	15	8	4181
Khorasan-e-Razavi.....	561	535	26	152333
North Khorasan.....	47	40	7	11513
Khuzestan.....	89	52	37	12224
Zanjan	90	82	8	20977
Semnan	97	76	21	19545
Sistan & Baluchestan	839	772	67	40685
Fars	214	182	32	45863
Qazvin	152	138	14	48411
Qom.....	113	92	20	15375
Kordestan	65	48	17	11859
Kerman	692	435	257	88424
Kermanshah	58	52	6	13105
Kohgiluyeh & Boyerahmad	10	8	2	2171
Golestan	127	116	11	39205
Gilan.....	193	165	28	67445
Lorestan	77	67	10	23385
Mazandaran	742	666	76	218989
Markazi	76	76	0	19024
Hormozgan	609	557	52	173766
Hamedan	326	302	24	59757
Yazd	63	53	10	15467

Including salary and allowances as well as other cash and in-kind payments to wage and salary workers.

Source: Statistical Centre of Iran.

12.22. CHARACTERISTICS OF SPECIFIC PRESERVATION AREA FOR GOODS IN THE NATIONAL STORAGES BY OSTAN

Year and Ostan	No. of storages ⁽¹⁾	Roofed space with side wall (hall)		Roofed space without side wall (hangar)		Open space (sq m)	Total capacity (cu m)
		Number	Area (sq m)	Number	Area (sq m)		
1384	397	1408	1124829	216	597385	1860557	10893866
1387	415	1506	1006280	227	487712	2030991	10781408
1390	643	1859	1460442	285	450844	3407579	16549968
1393	661	1899	2027948	299	459831	4224810	18740527
1398	1003	3027	2662009	642	802677	3321286	22981610
East Azarbayejan	17	100	108188	10	53133	122000	899924
West Azarbayejan	10	18	38132	6	3922	66500	352620
Ardebil	6	6	491	0	0	0	2111
Esfahan	43	181	67164	35	78767	81261	747648
Alborz	0	0	0	0	0	0	0
Ilam	2	12	9244	0	0	0	34578
Bushehr	5	5	1363	0	0	303	4997
Tehran	706	2203	2121218	512	523266	2067203	16396823
Chaharmahal & Bakhtiari	1	2	4000	0	0	10000	43000
South Khorasan	0	0	0	0	0	0	0
Khorasan-e-Razavi	31	131	67595	2	3694	11847	306246
North Khorasan	3	3	1999	0	0	0	7997
Khuzestan	8	2	806	3	2498	1289	13777
Zanjan	1	11	4412	5	1576	0	15632
Semnan	4	6	8902	1	400	16000	71463
Sistan & Baluchestan	16	31	17897	0	0	0	74295
Fars	8	16	5547	0	0	0	23771
Qazvin	2	44	21079	3	9898	33540	223424
Qom	16	18	1281	19	4117	728	16978
Kordestan	3	5	3937	0	0	0	18111
Kerman	0	0	0	0	0	0	0
Kermanshah	5	6	470	14	30522	0	93443
Kohgiluyeh & Boyerahmad	0	0	0	0	0	0	0
Golestan	15	34	34363	0	0	16928	181728
Gilan	4	17	9887	3	25830	86100	364938
Lorestan	8	5	3497	3	8774	0	40918
Mazandaran	13	29	17353	0	0	0	63229
Markazi	0	0	0	0	0	0	0
Hormozgan	68	108	67776	27	56281	790587	2764029
Hamedan	6	22	29025	0	0	7000	107388
Yazd	2	13	16385	0	0	10000	112541

Referring to the establishments whose main or side activity is warehousing.

Source: Statistical Centre of Iran.

12.23. CHARACTERISTICS OF NATIONAL COLD STORAGEES BY TYPE OF HALLS AND OSTAN

Year and Ostan	Number of cold storages ⁽¹⁾	One-circuit below zero			One-circuit above zero		
		Number	Area (sq m)	Volume (cu m)	Number	Area (sq m)	Volume (cu m)
1384.....	443	472	128433	577420	2328	541650	2423755
1387.....	437	500	146295	642234	2609	630363	2623115
1390.....	537	477	188115	811753	3295	938887	4250233
1393.....	676	684	238720	1042901	3554	1086879	4719831
1398.....	887	986	336087	1407129	4860	2007885	7386202
East Azarbayejan.....	72	53	17986	71943	438	149022	821157
West Azarbayejan.....	177	207	41063	160617	1330	424310	1805171
Ardebil.....	12	43	8590	34360	37	15401	69335
Esfahan.....	34	30	1292	6460	97	19422	48556
Alborz.....	28	4	462	2179	457	118868	469000
Ilam.....	2	4	1260	5760	13	4500	21920
Bushehr.....	3	14	1002	3029	0	0	0
Tehran.....	15	35	24690	122715	74	22576	76874
Chaharmahal & Bakhtiari.....	6	2	1568	3136	82	13364	45223
South Khorasan.....	7	13	880	4478	4	47	140
Khorasan-e-Razavi.....	37	50	13255	67795	199	90260	360022
North Khorasan.....	5	0	0	0	6	1034	4136
Khuzestan.....	31	23	5140	21060	50	14857	69772
Zanjan.....	8	0	0	0	49	14822	46039
Semnan.....	13	8	1459	5866	102	23287	81629
Sistan & Baluchestan.....	33	27	5182	16295	96	22126	56988
Fars.....	16	0	0	0	55	2377	11173
Qazvin.....	12	20	5506	13129	125	13760	34395
Qom.....	7	0	0	0	200	385225	401407
Kordestan.....	11	15	2532	9364	51	10009	50577
Kerman.....	188	337	120697	519234	39	17607	68495
Kermanshah.....	5	1	517	2348	25	740	3522
Kohgiluyeh & Boyerahmad.....	2	2	600	2400	8	2670	12300
Golestan.....	8	11	796	2315	42	9621	39932
Gilan.....	22	10	2472	8967	108	33435	140366
Lorestan.....	9	6	2361	10210	32	18537	85920
Mazandaran.....	78	19	6216	24863	977	98267	425339
Markazi.....	8	20	10874	28681	24	4333	26000
Hormozgan.....	12	10	2503	5007	32	5348	15847
Hamedan.....	20	24	57184	254916	95	470379	2092439
Yazd.....	6	0	0	0	14	1680	2530

12.23. CHARACTERISTICS OF NATIONAL COLD STORAGE BY TYPE OF HALLS AND OSPAN (continued)

Year and Ostan	Two-circuit zero			Nominal capacity (ton)
	Number	Area (sq m)	Volume (cu m)	
1384.....	558	195531	808560	1091389
1387.....	790	222913	989542	1183597
1390.....	743	246429	1101817	1520077
1393.....	784	274091	1188257	1830754
1398.....	832	4010822	15875576	3880988
East Azarbayejan	74	23488	93951	243225
West Azarbayejan	13	20570	74060	1517687
Ardebil	18	5522	22089	24543
Esfahan.....	0	0	0	73467
Alborz	30	5104	9377	175922
Ilam	2	1701	8505	4230
Bushehr	0	0	0	2907
Tehran	136	53828	199922	239224
Chaharmahal & Bakhtiyari	0	0	0	52613
South Khorasan	2	350	1400	1846
Khorasan-e-Razavi.....	118	3757206	14945225	320284
North Khorasan	39	14808	31381	23302
Khuzestan.....	0	0	0	82179
Zanjan	0	0	0	67758
Semnan.....	0	0	0	31239
Sistan & Baluchestan	23	6868	24973	65200
Fars.....	0	0	0	800
Qazvin	13	4341	5294	70412
Qom.....	0	0	0	71567
Kordestan	20	5754	24531	20897
Kerman.....	41	18608	74433	267586
Kermanshah	28	10049	40336	26413
Kohgiluyeh & Boyerahmad	2	324	1620	5500
Golestan	17	434	1735	22228
Gilan.....	26	7597	21957	66528
Lorestan.....	5	6891	29289	26321
Mazandaran	140	26322	106216	208896
Markazi	15	35556	142222	71296
Hormozgan.....	10	2085	8320	6200
Hamedan	24	1538	5344	72701
Yazd	36	1878	3397	18017

1. Referring to the establishments whose main or side activity is cold storage.

Source: Statistical Centre of Iran.

12.24. VALUE ADDED, INTERMEDIATE CONSUMPTION, AND OUTPUTS OF NATIONAL STORAGE SERVICES ESTABLISHMENTS BY OSTAN (mln rials)

Year and Ostan	Value added	Intermediate consumption	Outputs			
			Total	Cellarage	Cold storage fees	Other
1384.....	563487	134571	698058	192493	389339	116226
1387.....	1164478	248742	1413220	521203	773873	118144
1390.....	1783933	436868	2220801	848409	890921	481471
1393.....	3461535	797249	4258783	1717476	1856578	684730
1398.....	10493054	2142378	12614078	5543699	5316220	1754159
East Azarbayejan.....	907853	131450	1039465	189616	716899	132950
West Azarbayejan.....	942215	201082	1138672	67695	924595	146382
Ardebil.....	104232	18857	123383	2209	115341	5833
Esfahan.....	220050	46235	266285	166507	79758	20020
Alborz.....	255452	71379	325924	0	282554	43370
Ilam.....	15082	1833	16915	1569	15346	0
Bushehr.....	28495	4332	30191	11300	18868	23
Tehran.....	4832112	990479	5825275	4238607	561012	1025656
Chaharmahal & Bakhtiyari.....	43797	4444	48241	2692	31718	13831
South Khorasan.....	23734	2129	6382	0	6382	0
Khorasan-e-Razavi.....	498015	104259	622513	108671	482074	31768
North Khorasan.....	46114	7399	39849	3902	33142	2805
Khuzestan.....	144072	22008	166346	11603	144591	10152
Zanjan.....	50919	19082	70000	28364	34565	7071
Semnan.....	60366	12619	72245	12860	56710	2675
Sistan & Baluchestan.....	93927	28872	121962	12528	108123	1311
Fars.....	216942	31774	243261	118857	100236	24168
Qazvin.....	201377	53597	258716	60659	127800	70257
Qom.....	47973	13468	62809	37248	24193	1368
Kordestan.....	50065	8983	59048	8329	48783	1936
Kerman.....	281902	84104	366006	0	357078	8928
Kermanshah.....	55658	12136	66049	11288	52629	2132
Kohgiluyeh & Boyerahmad.....	6083	1387	7470	0	7470	0
Golestan.....	132838	26024	158862	79311	75751	3800
Gilan.....	174007	30031	201404	39752	121201	40451
Lorestan.....	66273	12760	79033	22331	56178	524
Mazandaran.....	451306	74188	527454	23344	471228	32882
Markazi.....	32024	8307	39519	0	38630	889
Hormozgan.....	295314	81395	374075	242776	41214	90085
Hamedan.....	144344	24426	169648	15059	144111	10478
Yazd.....	70512	13340	87078	26622	38041	22415

Source: Statistical Centre of Iran.

12.25. NUMBER AND CAPACITY OF OPERATING SILOS AND WHEAT WAREHOUSE BY TYPE (1000 tons)

Year and Ostan	Wheat silo		Type of wheat warehouse			
			Regular covered		Uncovered	
	Number	Capacity	Number	Capacity	Number	Capacity
1380	91	2709	36	490	16	1730
1385	94	2881	42	538	16	1900
1390	84	2985	67	1078	17	1980
1395	88	3115	69	1118	17	1980
1396	88	3115	70	1138	17	1980
1397	89	3165	69	1138	17	1980
1398	84	2930	56	1108	18	1640
1399⁽¹⁾	113	3640	27	398	18	1640
East Azarbayejan	5	70	3	45	0	0
West Azarbayejan	5	154	0	0	0	0
Ardebil	2	70	0	0	1	100
Esfahan	3	144	0	0	1	180
Alborz	1	80	1	40	1	140
Ilam	0	0	1	20	0	0
Bushehr	2	48	1	40	0	0
Tehran	3	190	1	5	2	20
Chaharmahal & Bakhtiari	1	28	0	0	0	0
South Khorasan	3	35	0	0	0	0
Khorasan-e-Razavi.....	10	306	2	40	1	240
North Khorasan.....	2	55	0	0	0	0
Khuzestan.....	9	292	0	0	1	150
Zanjan	1	8	0	0	1	100
Semnan	2	48	0	0	1	80
Sistan & Baluchestan	1	13	1	20	0	0
Fars	12	430	0	0	2	200
Qazvin	1	80	2	25	0	0
Qom	2	110	1	20	0	0
Kordestan	3	78	4	55	0	0
Kerman	5	216	0	0	1	40
Kermanshah	9	238	1	8	2	80
Kohgiluyeh & Boyerahmad	1	28	0	0	0	0
Golestan	10	272	3	20	0	0
Gilan	1	103	0	0	0	0
Lorestan	8	185	1	5	0	0
Mazandaran.....	1	103	0	0	0	0
Markazi	4	83	0	0	2	130
Hormozgan.....	0	0	1	20	1	100
Hamedan	5	156	4	35	0	0
Yazd	1	18	0	0	1	80

1. Considering the cession of a number of storage centers to the private sector and the utilization of a number of capacities under construction, as well as deactivation of some storage centers located in Ostani (provincial) centres, the relevant statistics have changed as described above.

Source: Iranian Government Commerce Company

